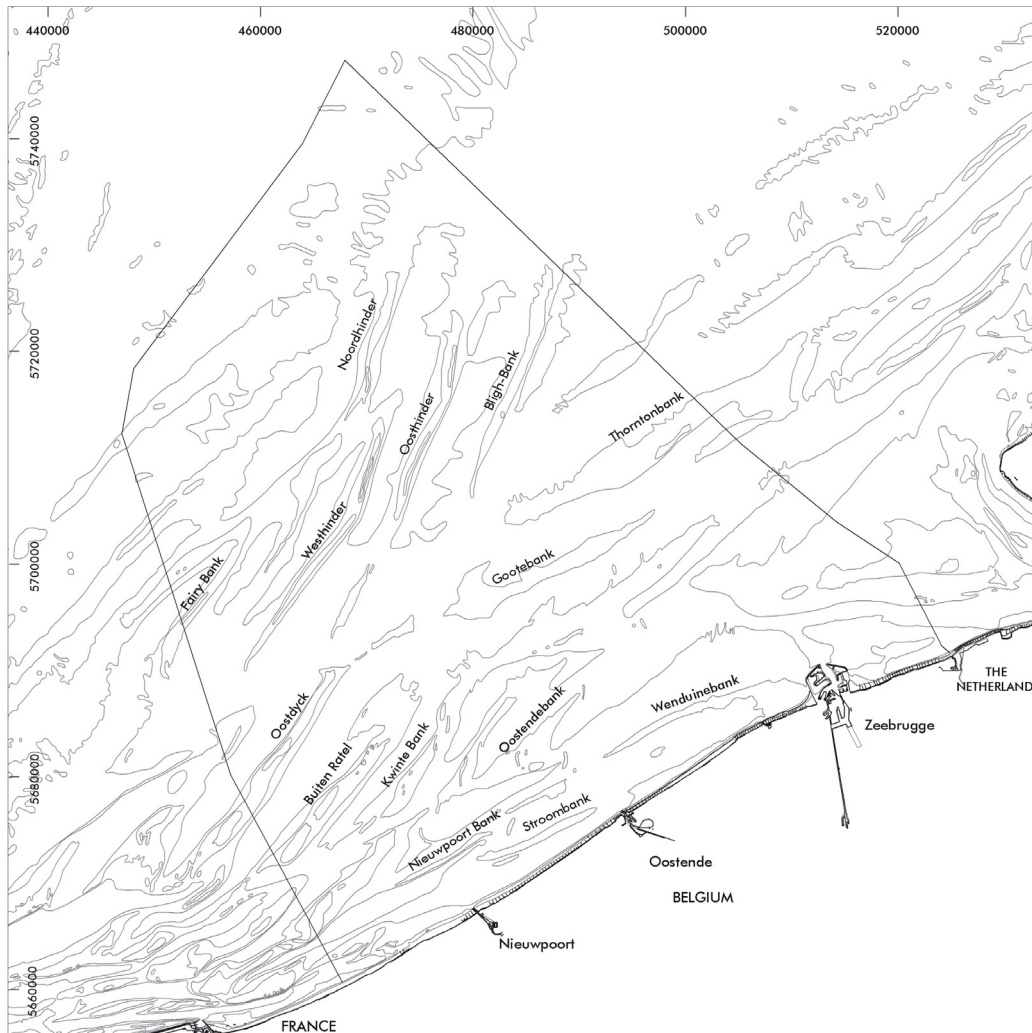


Map I.1.2a. Bathymetry of the Belgian part of the North Sea

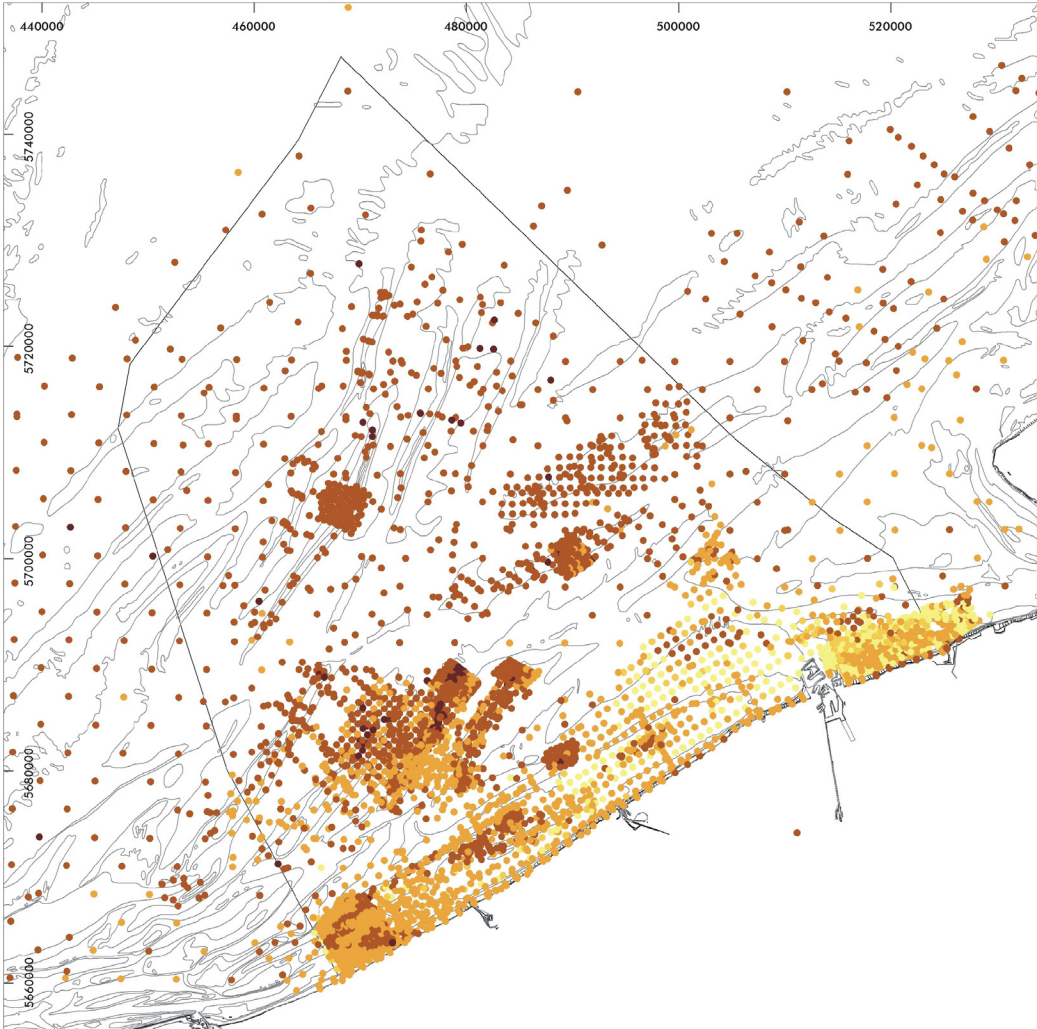


Original data source: Ministry of the Flemish Community, Department of Environment and Infrastructure, Waterways and Marine Affairs Administration, Division Coast, Hydrographic Office
Map preparation: RCMG - Ghent University



May 2005

Map I.1.2b. Distribution of the surficial sediment sampling points. The colour gives an indication of their median grain-size (based on sedisurf@ database (1976-)



Median grain size (µm)

- 0 - 63
- 63- 125
- 125 - 250
- 250 - 500
- > 500

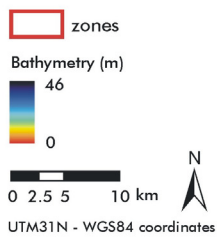
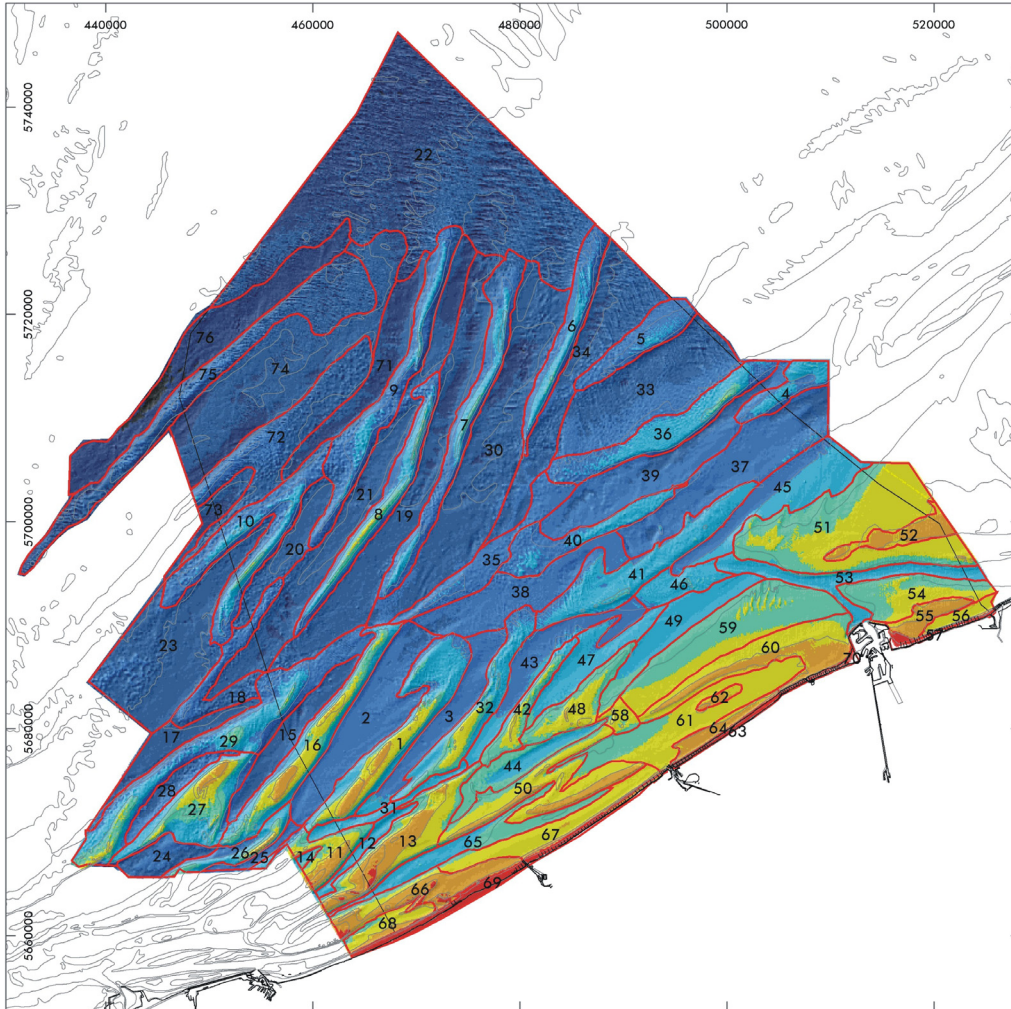
0 2.5 5 10 km
UTM31N - WGS84 coordinates

Original data source: Sedisurf database, Renard Centre
of Marine Geology - Ghent University
Map preparation: RCMG - Ghent University

May 2005



Map I.1.2.c. Zonation of the Belgian part of the North Sea, superimposed on a bathymetry-based digital terrain model



Original data source: Ministry of the Flemish Community, Department of Environment and Infrastructure, Waterways and Marine Affairs Administration, Division Coast, Hydrographic Office

Hydrographic Office of the Netherlands
United Kingdom Hydrographic Office

Data analysis: RCMG - Ghent University
Map preparation: RCMG - Ghent University

May 2005

