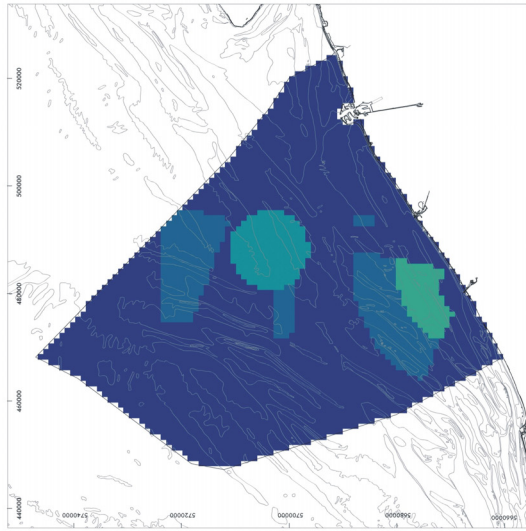
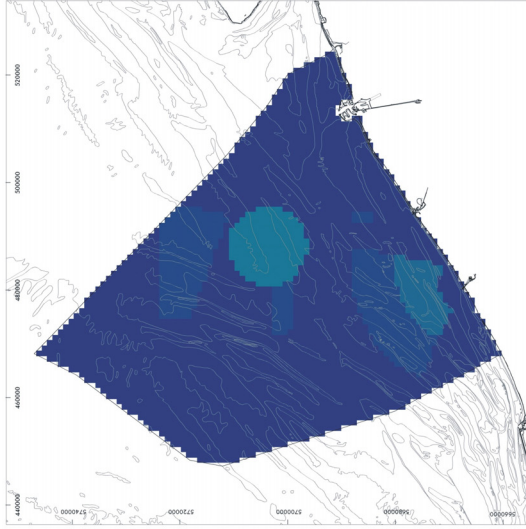


# Impact maps - Military exercises

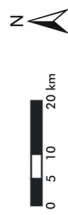
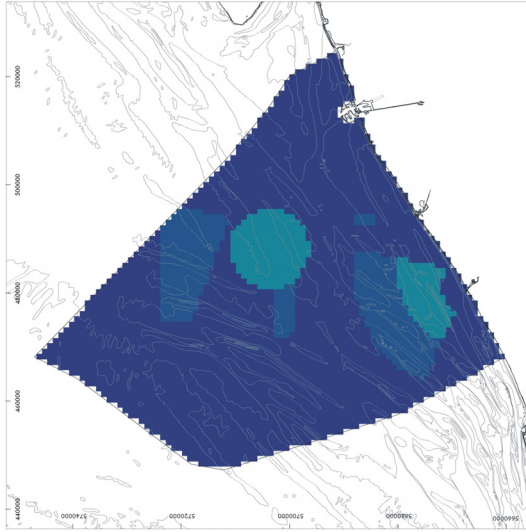
Chemical impact



Ecological impact



Physical impact



Relative impact value



High: 9

Low: 0

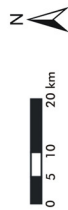
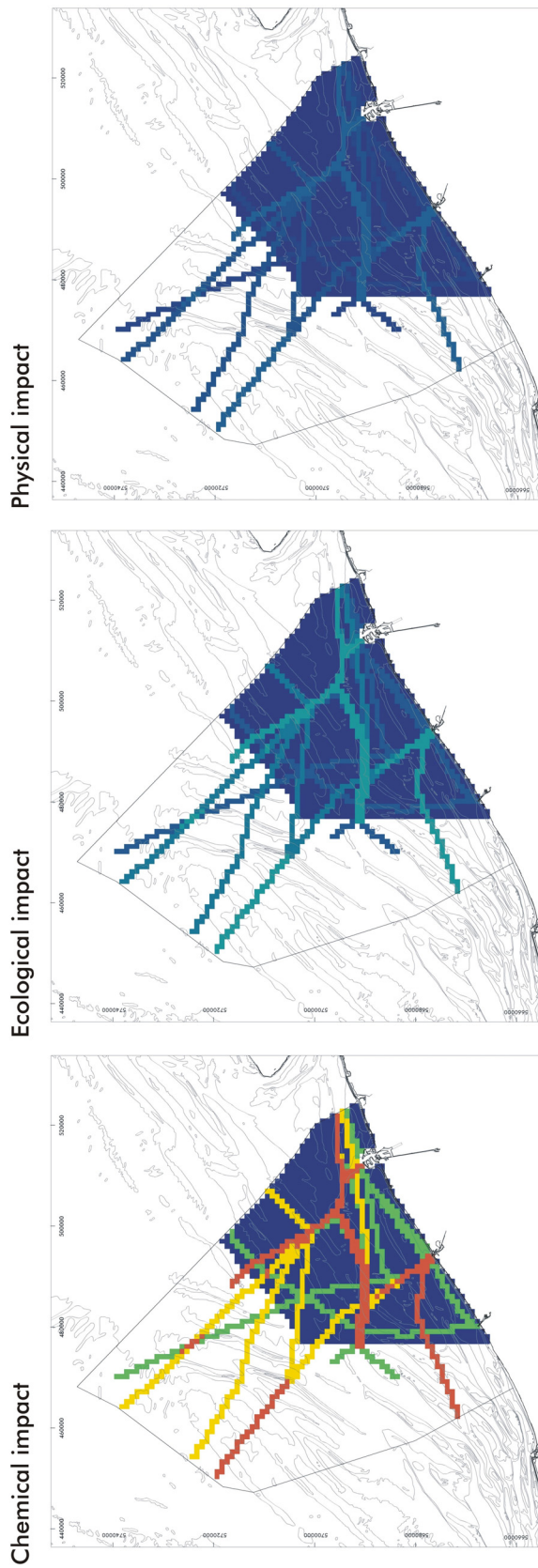


Original data source: spokesmen of the Army, Air Force and Navy  
Components, Federal Government Department of Defence  
Impact analysis: ECOLAS NV  
Map preparation: RCMG - Ghent University

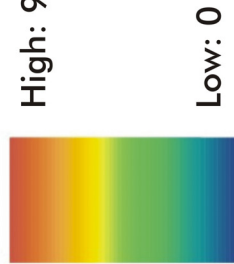
Data cover military exercises from 01 January 2001 - 31 December 2001

May 2005

# Impact maps - Shipping



Relative impact value



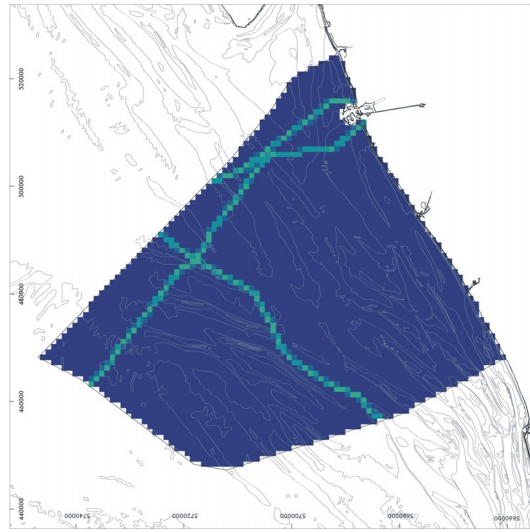
Original data source: IVS-SRK (Ministry of the Flemish Community & Dutch Ministry of Transport, Public Works and Water Management)  
 Transeuropa Ferries, Ferryways  
 Impact analysis: ECOLAS NV  
 Map preparation: RCMG - Ghent University

Shipping data cover merchant shipping from 01 April 2003 - 31 March 2004  
 May 2005

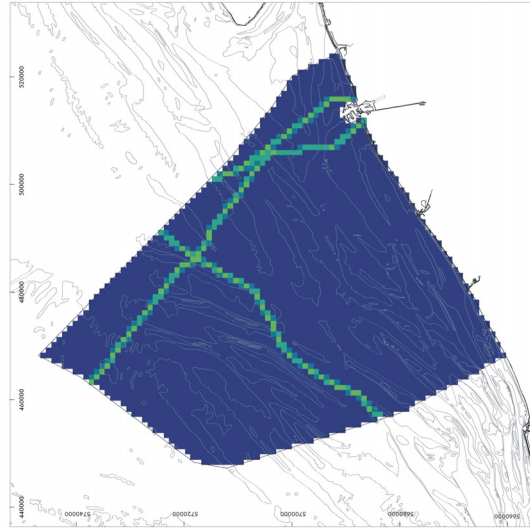


# Impact maps - Pipeline construction

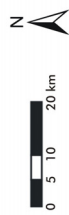
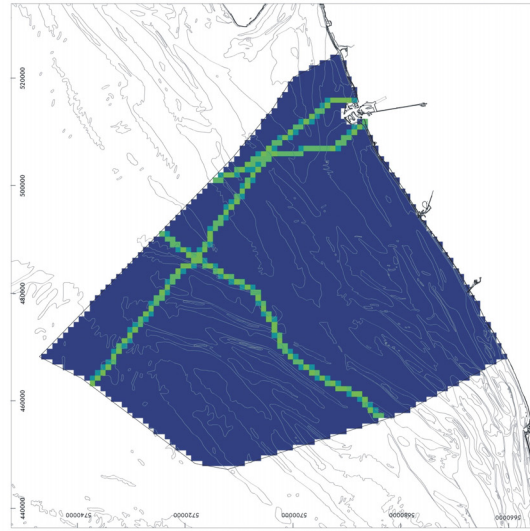
Chemical impact



Ecological impact



Physical impact

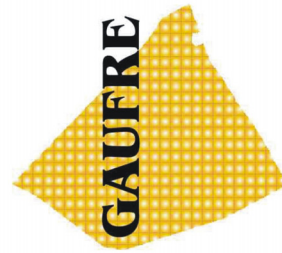


Relative impact value



High: 9

Low: 0

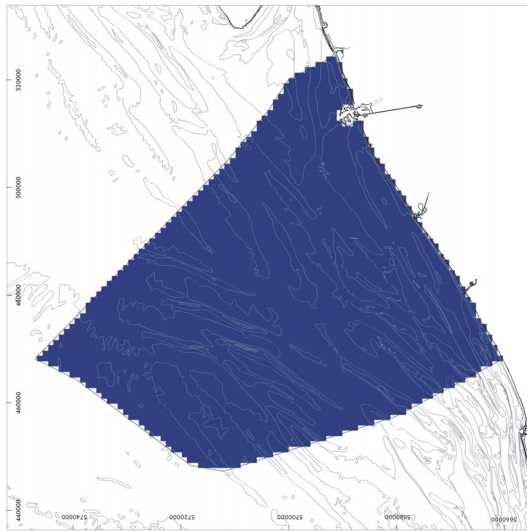


Original data source: Federal Public Service Economy, SMEs, Self-employed and Energy  
Ministry of the Flemish Community, Department of Environment and Infrastructure,  
Waterways and Marine Affairs Administration, Division Coast, Hydrographic Office  
Impact analysis: ECOLAS NV  
Map preparation: RCMG - Ghent University

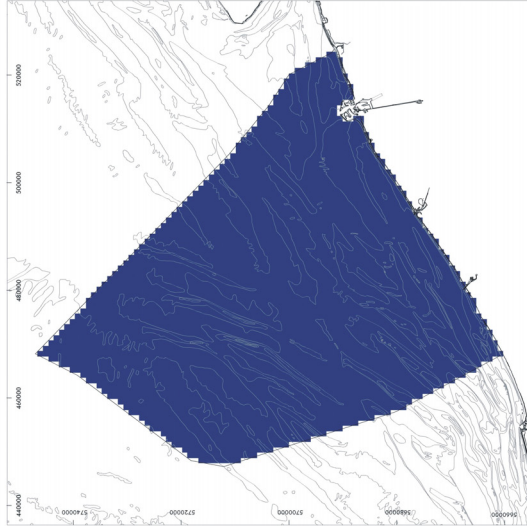
May 2005

# Impact maps - Pipeline exploitation

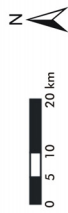
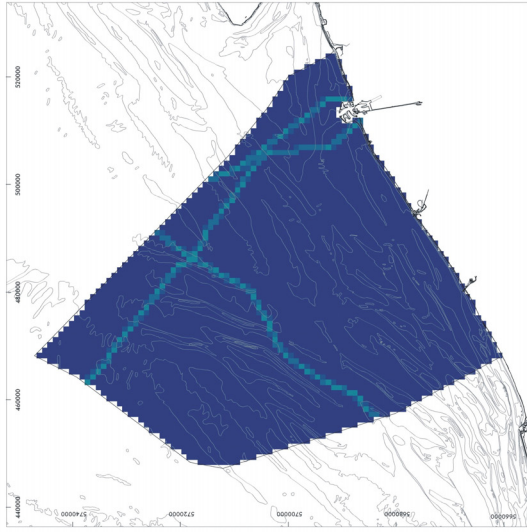
Chemical impact



Ecological impact



Physical impact



Relative impact value



High: 9

Low: 0

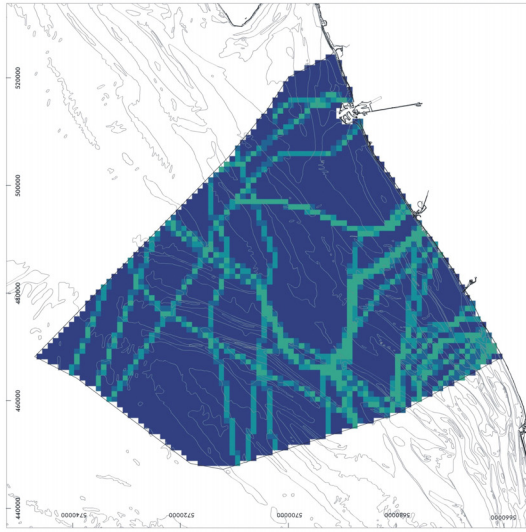


Original data source: Federal Public Service Economy, SMEs, Self-employed and Energy  
Ministry of the Flemish Community, Department of Environment and Infrastructure,  
Waterways and Marine Affairs Administration, Division Coast, Hydrographic Office  
Impact analysis: ECOLAS NV  
Map preparation: RCMG - Ghent University

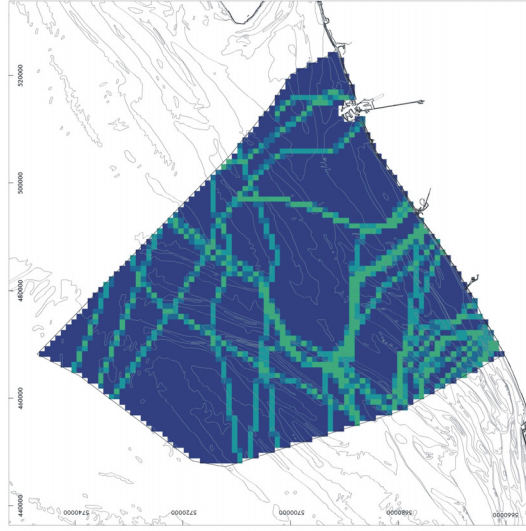
May 2005

# Impact maps - Electricity and telecom cable construction

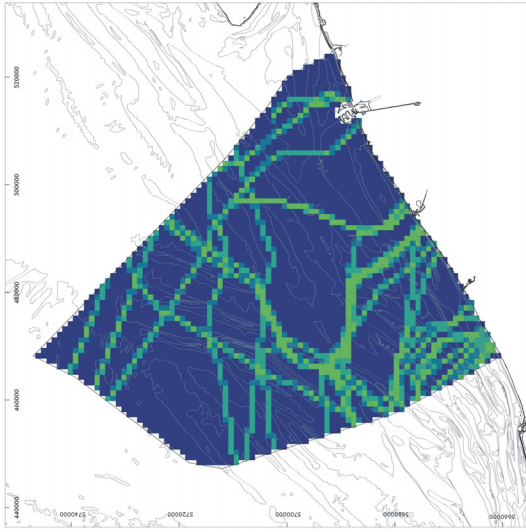
Chemical impact



Ecological impact



Physical impact



Relative impact value



High: 9

Low: 0



Original data source: Federal Public Service Economy, SMEs, Self-employed and Energy  
 Ministry of the Flemish Community, Department of Environment and Infrastructure,  
 Waterways and Marine Affairs Administration, Division Coast, Hydrographic Office  
 C-power NV

TV Electrabel - Ondernemingen Jan De Nul (Project Seanergy)

Impact analysis: COLAS NV

Map preparation: RCMG - Ghent University

May 2005