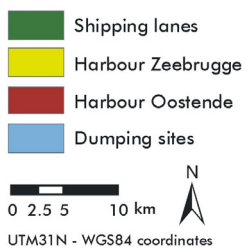
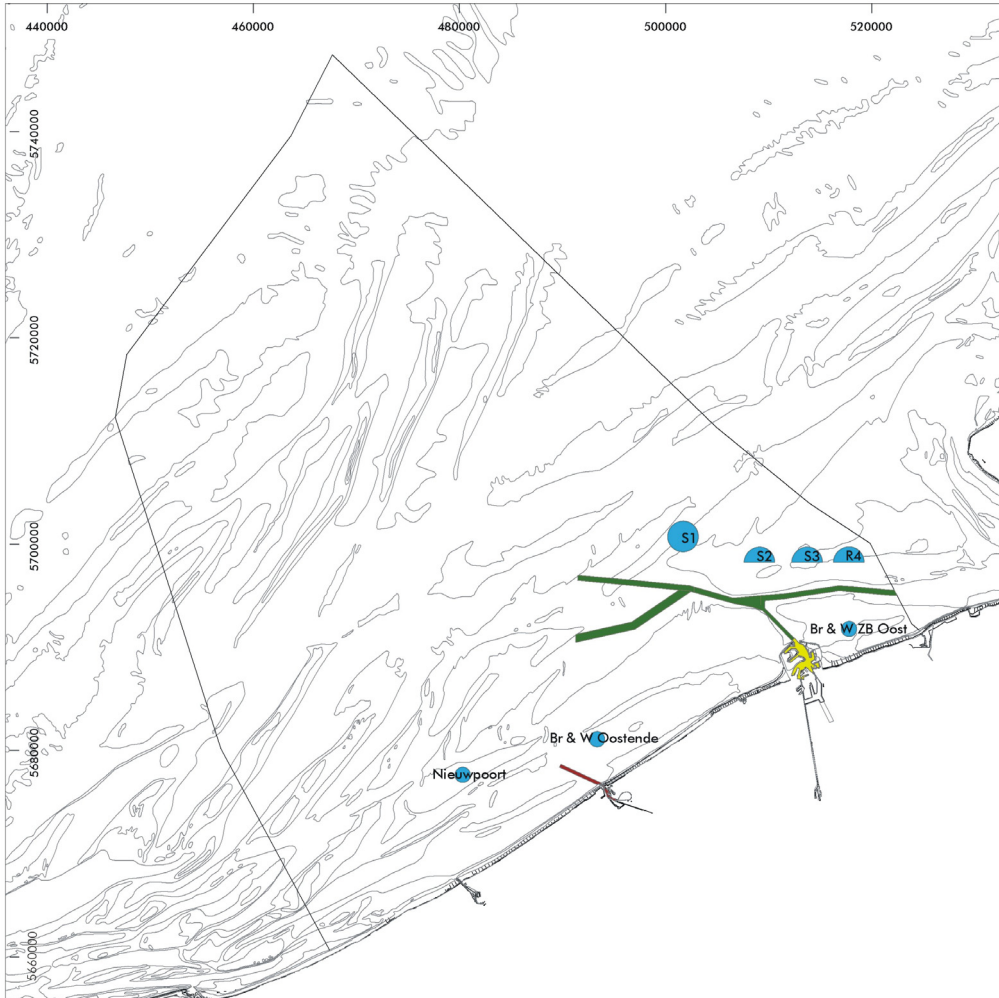


Map I.3.7a. Dredging and disposal of dredged material: spatial distribution

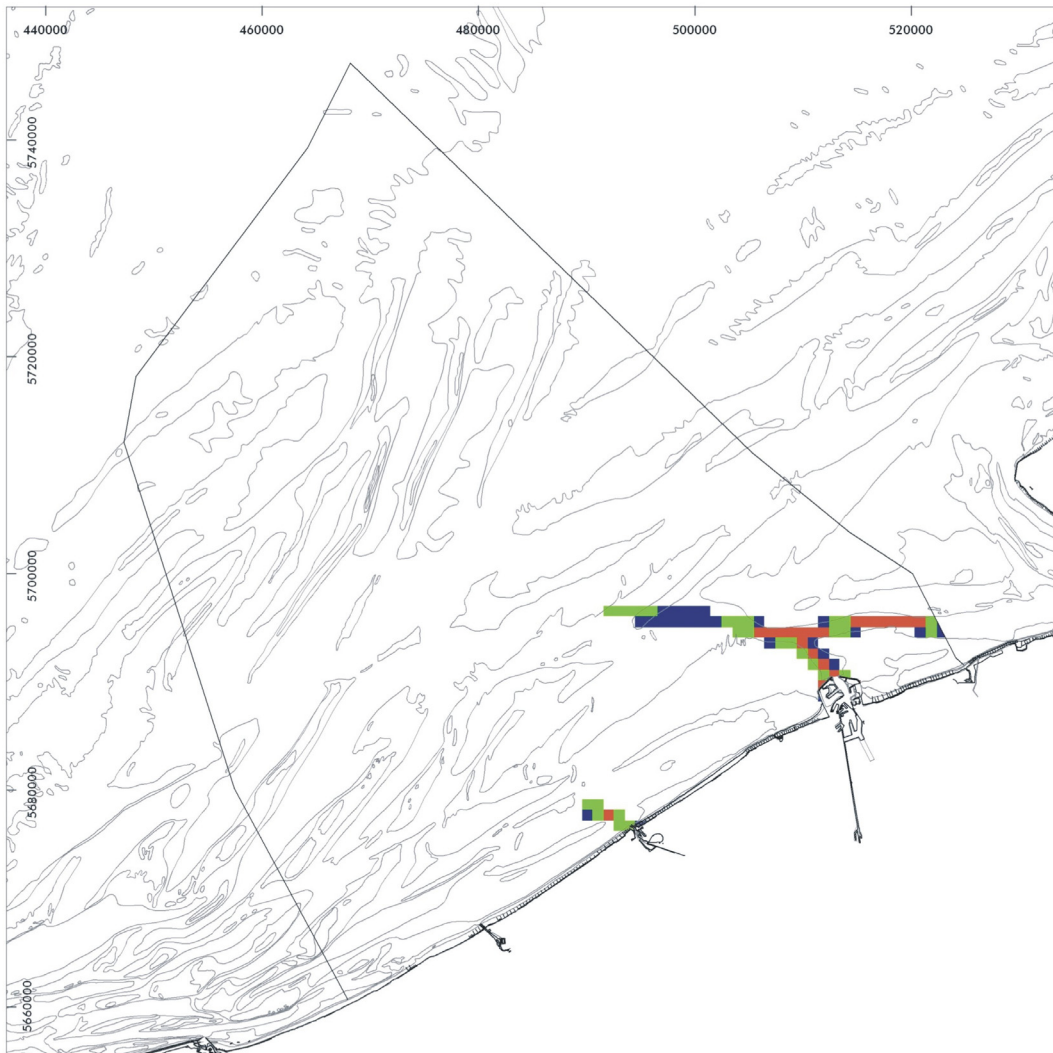


Original data source: Ministry of the Flemish Community, Department of Environment and Infrastructure, Waterways and Marine Affairs Administration, Division Coast, Hydrographic Office & Maritime Entrance Division
 Map preparation: RCMG - Ghent University

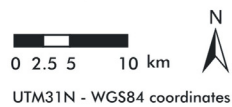
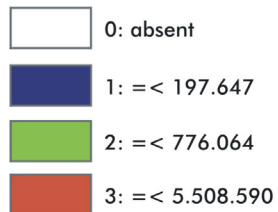
May 2005



Map I.3.7b. Dredging: use intensity



Use intensity of dredging
(ton dry material(m³)/year/km²)



Original data source: Ministry of the Flemish
Community, Department of Environment and
Infrastructure, Waterways and Marine Affairs
Administration, Division Coast, Hydrographic
Office & Maritime Entrance Division
GEMS International N.V.

Data analysis: RCMG - Ghent University
Map preparation: RCMG - Ghent University

Data cover dredging activities from 01 April
1998 - 31 March 2003

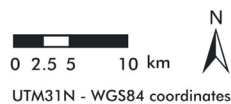
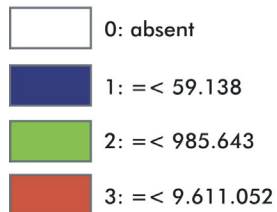
May 2005



Map I.3.7c. Disposal of dredged material: use intensity



Use intensity of disposal of dredged material
(ton dry material (m³)/year/km²)



Original data source: Ministry of the Flemish Community,
Department of Environment and Infrastructure, Waterways
and Marine Affairs Administration: Division Coast, Hydrographic
Office & Maritime Entrance Division
GEMS International N.V.
Data analysis: RCMG - Ghent University
Map preparation: RCMG - Ghent University

Data cover disposal activities from 01 April 1998 -
31 March 2003

May 2005

