

Belgian research facilities: Research Vessel Belgica



Dr. Lieven Naudts

Coordinator RV Belgica

Royal Belgian Institute of Natural Sciences – Operational Directorate Natural Environment

New Research Vessel Belgica



Operational & management organization

- **Federal Research Vessel**

- **Belgian Science Policy Office (BELSPO)** is the owner of the multidisciplinary research vessel as representative of the Belgian State.
- The **Royal Belgian Institute of Natural Sciences (RBINS)** manages the RV Belgica (which includes, the planning of the scientific campaigns, the responsibility for the ship's budget and the scientific instrumentation support).
- The **private operator Genavir** is responsible for the integrated management and operation of the ship (which includes, the crewing and the operational & maintenance support). 
- The **Belgian Navy** provides the bridge personnel (Captain, Chief Mate, Second Officer) and the home port of Zeebrugge.



General characteristics

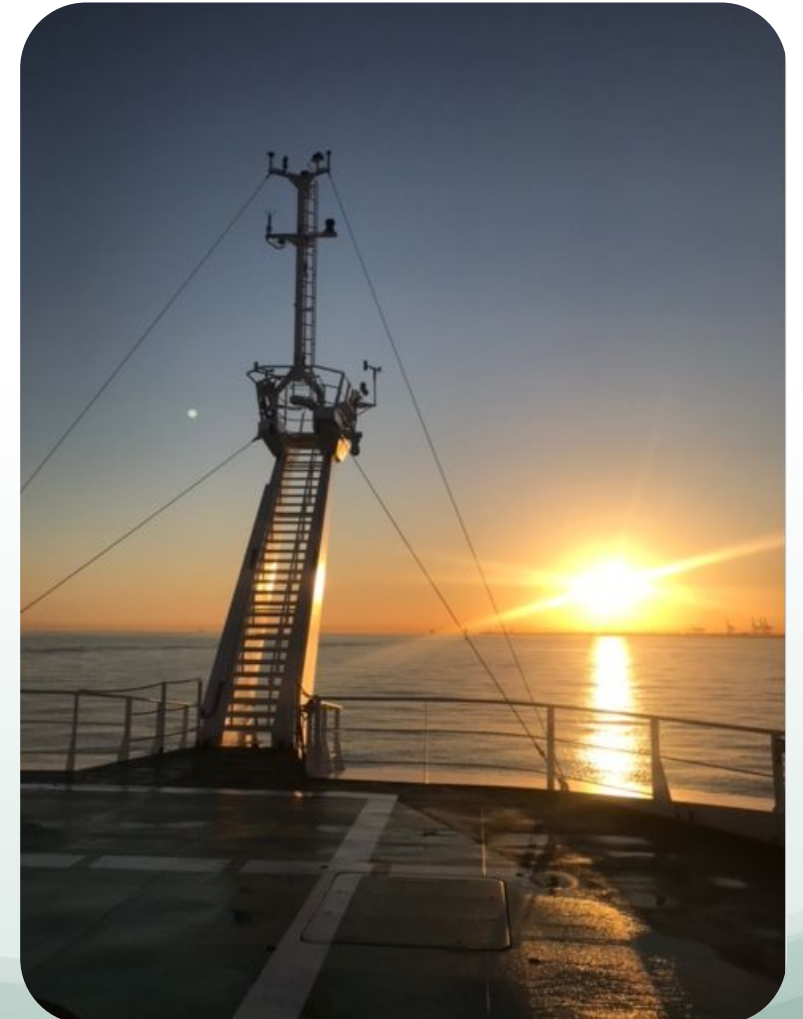
- **Full Ocean Research Vessel**
 - 71.4 m length, 16.8 m beam, max. 4.8 draft, 3870 ton displacement
 - 11 kn operational speed (max. 13 kn), 30-ton bollard pull
 - North Sea, Atlantic Ocean, Mediterranean Sea
 - Instrumentation adapted to water depths of 5000 m
 - Ice Class (DNV ICE-1C) for summer operations in Arctic areas



Polar Symposium



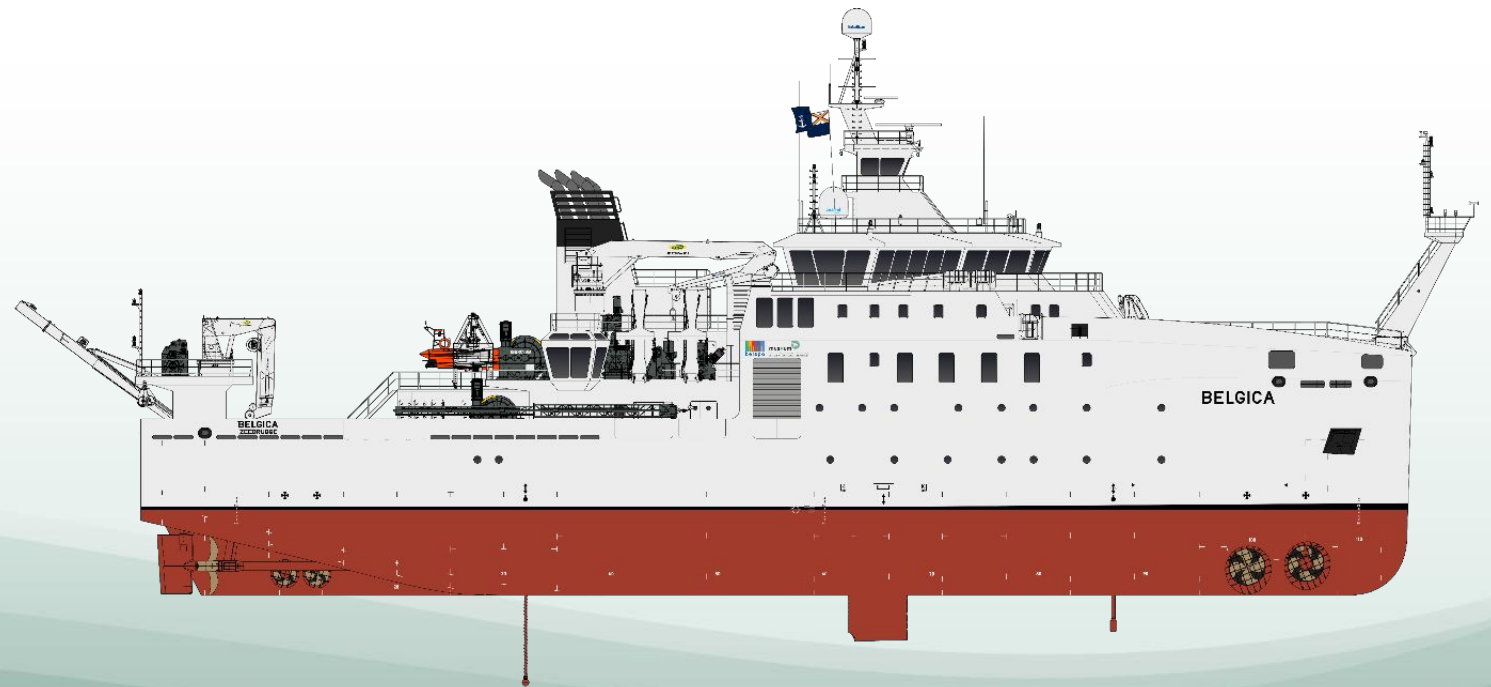
odnature.naturalsciences.be/belgica



22.09.22 - Brussels

General characteristics

- **New Capabilities**
 - Dynamic Positioning Class 2 (DP-2) (2 stern & 2 bow thrusters & 2 aft propellers)
 - Roll reduction system
 - 16 crew – 24 scientists & marine technicians (14 single - 13 double cabins)
 - Diesel-Electric propulsion
 - DNV Silent-R
 - MARPOL TIER III
 - 30-day autonomy
 - 300 days/year at sea



Capabilities

Multipurpose research vessel

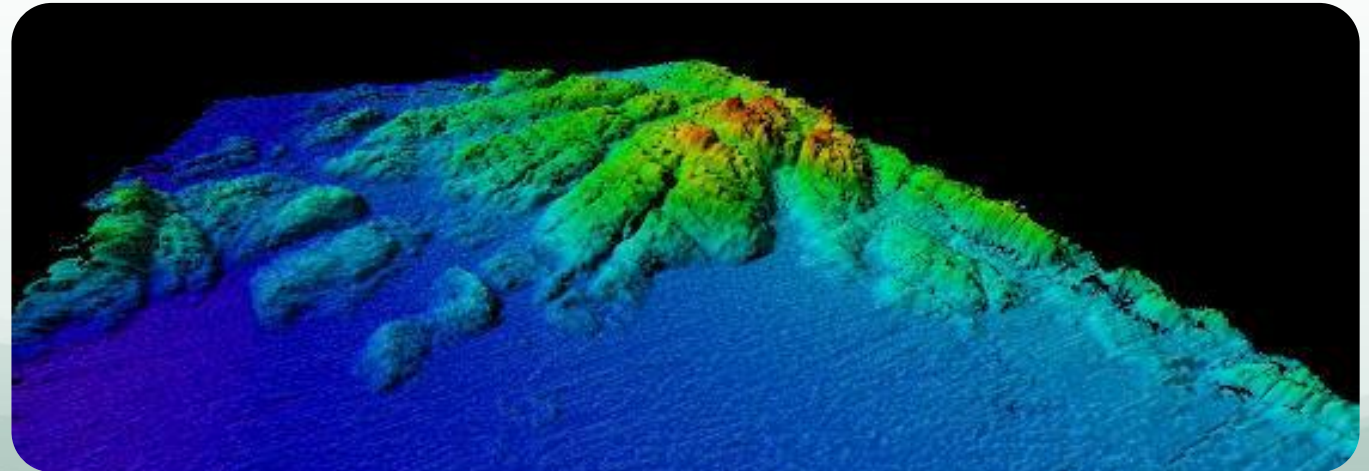
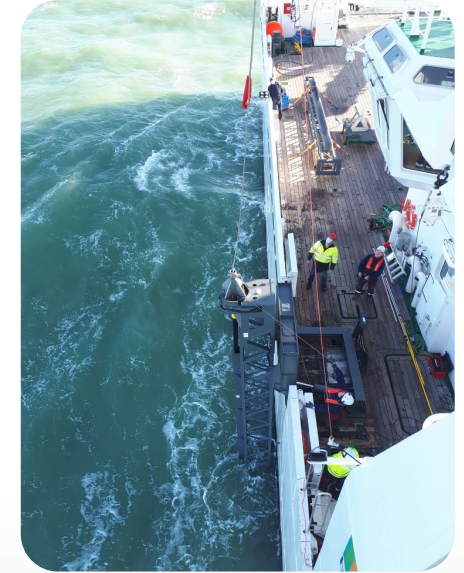
- Large deck space
 - > 330 m² free deck space (forward & aft deck), incl. UAV pad
 - Max. 9 20" containers
 - > 105 ton deck load
- Adapted to all EU research infrastructures e.g., AUVs, ROVs, drill rigs, seismic systems etc.



Capabilities

Multipurpose research vessel

- 14 scientific labs
 - > 430 m² lab space
- Cranes, Frames, winches
 - 3 cranes (8t, 4t, 1.5t / 17 m)
 - 4 frames (10t, 3t, 1t)
 - 12 winches (5000 m)
- Full acoustic suite
 - 3 multibeam
 - Subbottom profiler
 - Scientific echosounder
 - Fish sonar & ADCPs
 - USBL underwater navigation



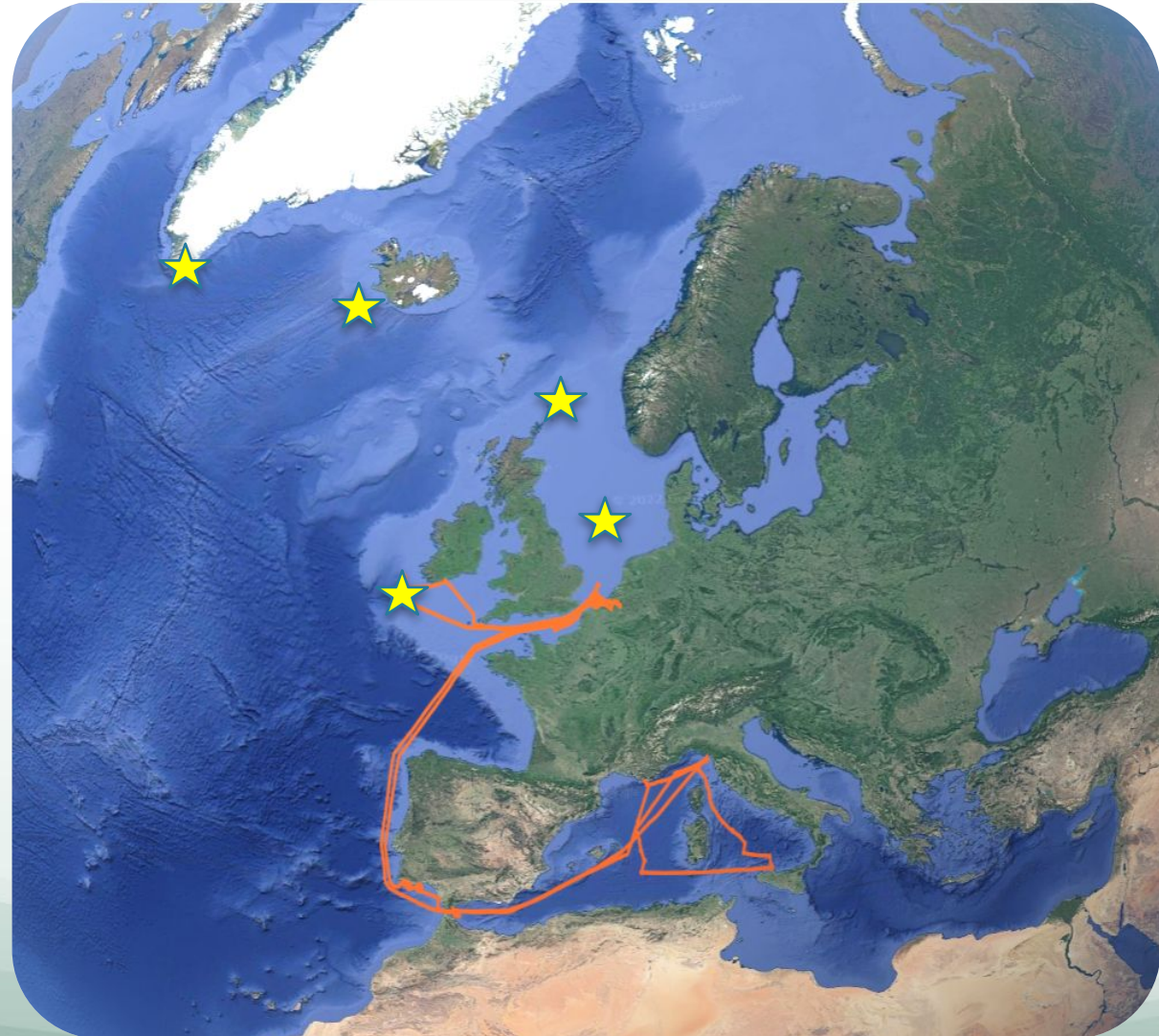
Operational Life

Multipurpose research vessel 2022

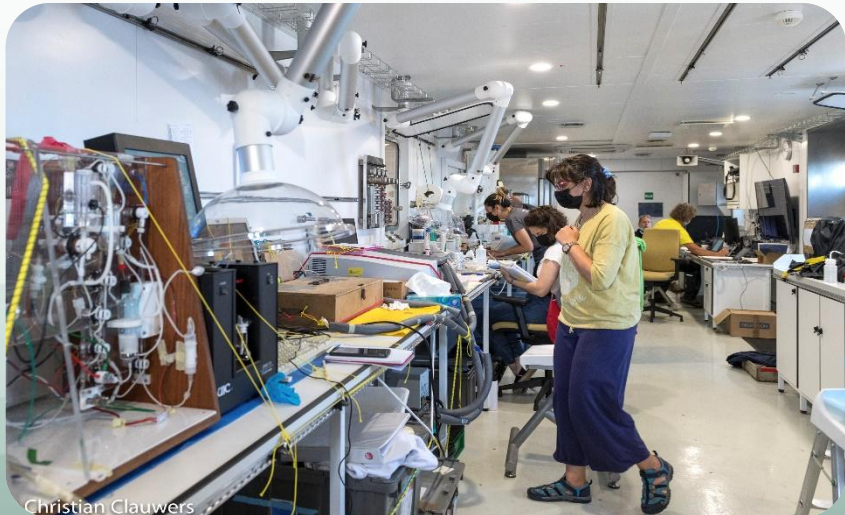
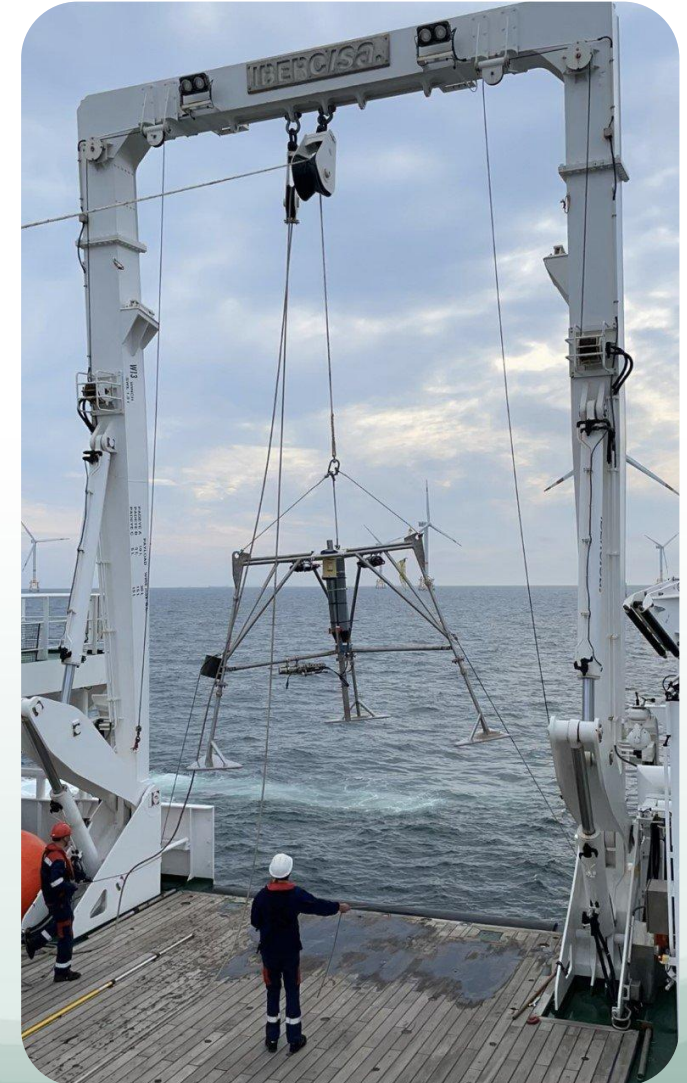
- 22 campaigns performed
 - > 16 000 nm sailed
 - > 370 scientists
 - 60% BE – 40% non-BE
 - 65 % M – 35% F

2023

- 468 scientific sailing days requested
 - Greenland
 - Iceland
 - Shetland
 - Ireland
 - North Sea



Operational Life



Christian Clauwers

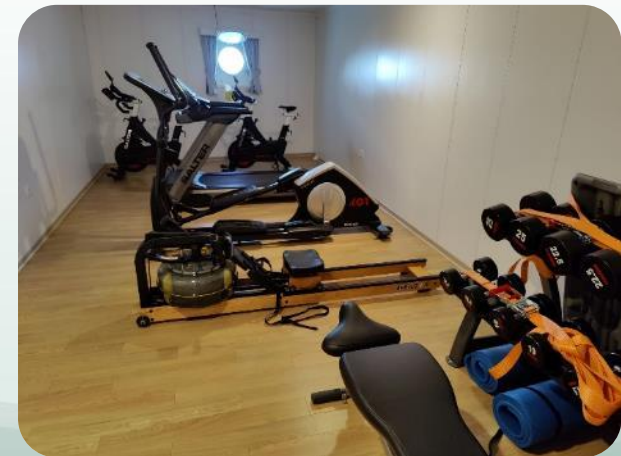
Polar Symposium



odnature.naturalsciences.be/belgica

22.09.22 - Brussels

A ship to work and to live on...



Thank you!



Please visit: odnature.naturalsciences.be/belgica & belspo.be/NewRV

HowBigIsBelgica Facebook & Twitter