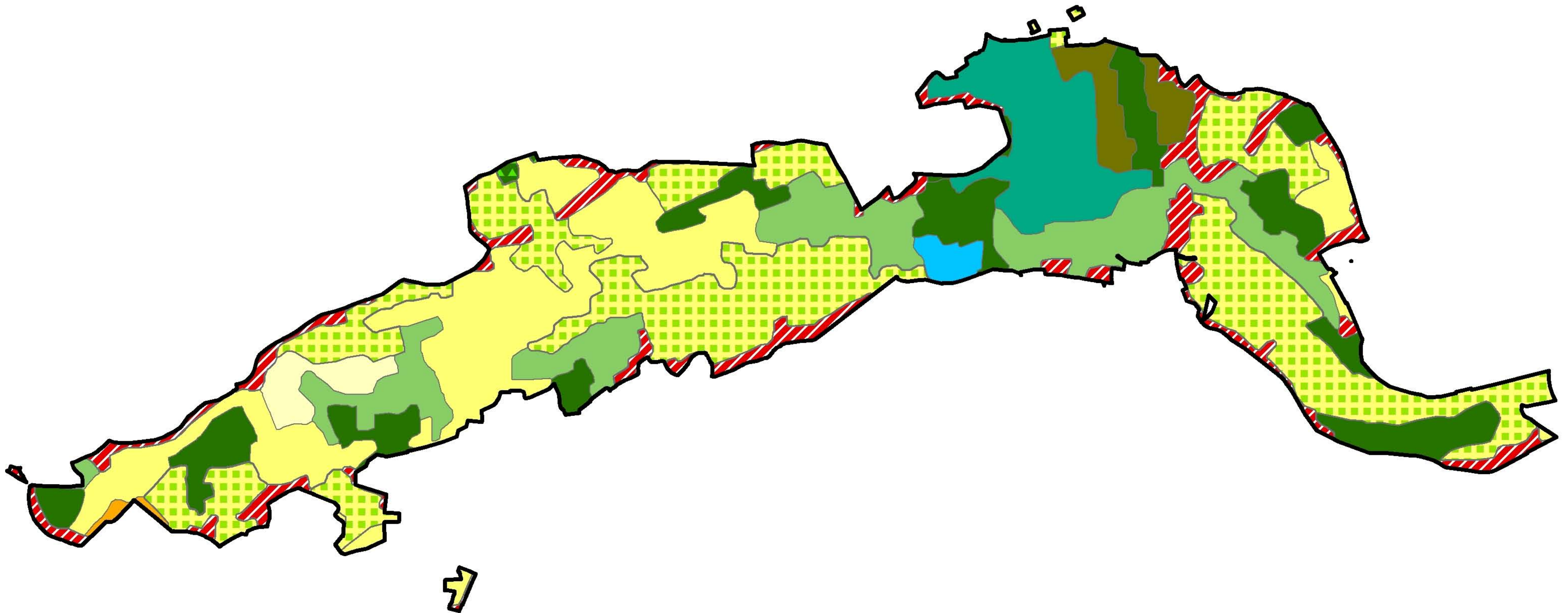


Flemish region

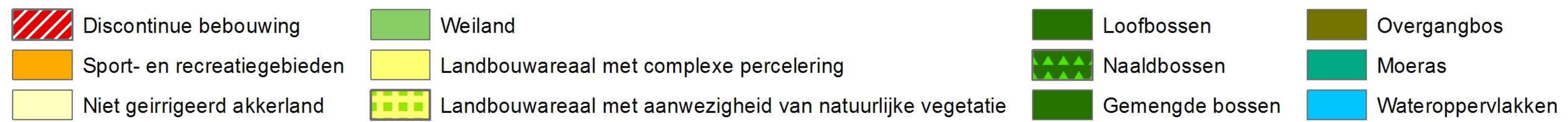
Walloon region

Flemish N2K site : Demer valley

Walloon N2K site : Lesse valley



Bodemgebruik (CORINE)



Description of situations 0 and 1 in the two study sites

1. Walloon region : Lesse valley

1.1. Description of situation 0 (current situation)

1.1.1. Location of Lesse valley in Wallonia

The Lesse basin is located in the Walloon Region, on both Luxembourg and Namur provinces. The Natura 2000 site “Bassin de la Lesse entre Villers-sur-Lesse et Chanly” (BE 35038) covers a section of the Lesse Valley situated on the threshold of the vast Ardennes massif and in the Famenne. The Lesse River rises near Libramont (Ochamps – Luxembourg Province) and flows into the Meuse in Anseremme, near Dinant. This river is 89 km long and crosses the municipalities of Daverdisse, Libin, Libramont-Chevigny, Tellin, Wellin, Dinant, Houyet and Rochefort. The Lesse basin has a superficies of 134338 hectares (1343,4 km²) and hosts not less than 1920 kilometers of rivers. Inhabited by only 62 500 people, this basin is the less densely inhabited of all the Walloon under-basins (Wikipedia, 2008).

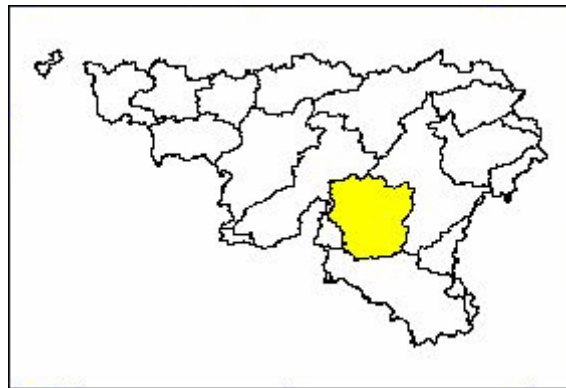


Fig. 1: Location of the under-basin of the Lesse (in yellow)

1.1.2. Socio-economic analysis

Population

The studied Natura 2000 site covers the four following municipalities: Nassogne (in the west), Rochefort (in the north), Tellin and Wellin (in the south). The population of municipalities is distributed as follows:

Municipality	Superficy (km ²)	Number of inhabitants	Density of population (#hab/km ²)	Evolution (on an annual basis)
Nassogne	112	5 045	44	+ 1,37%
Rochefort	165,3	12 133	72,8	+ 0,79%
Tellin	56,6	2 386	40,7	+ 1,71%
Wellin	67,5	2 958	43,5	+ 0,58%

Table 1 : Population distribution between municipalities

(ref : <http://www.statbel.fgov.be> Population de droit par commune au 1er janvier 2007 - http://www.statbel.fgov.be/figures/dsp_fr.asp Densité de population au 01/01/2005)

The Figure 2 illustrates the population density in the Natura 2000 site concerned, and the surroundings.

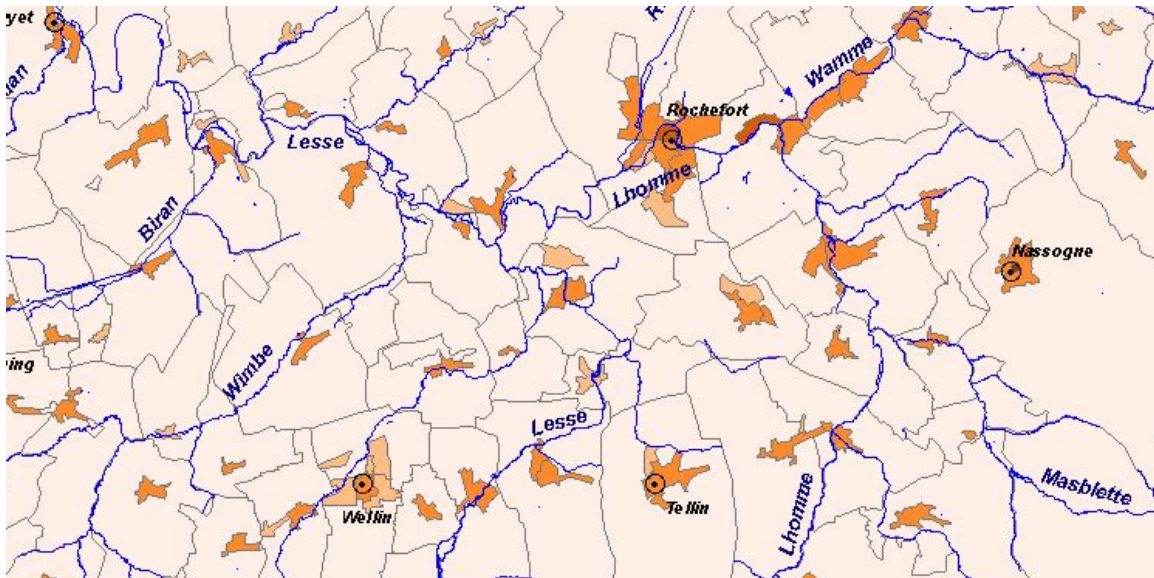


Fig. 2: Density of population (ref : Carte des Etats des lieux du sous-bassin Lesse – MRW
 Observatoire des Eaux de Surface, janvier 2004 -
http://environnement.wallonie.be/directive_eau/cartes/le_ca/le_carte.asp)

Land use

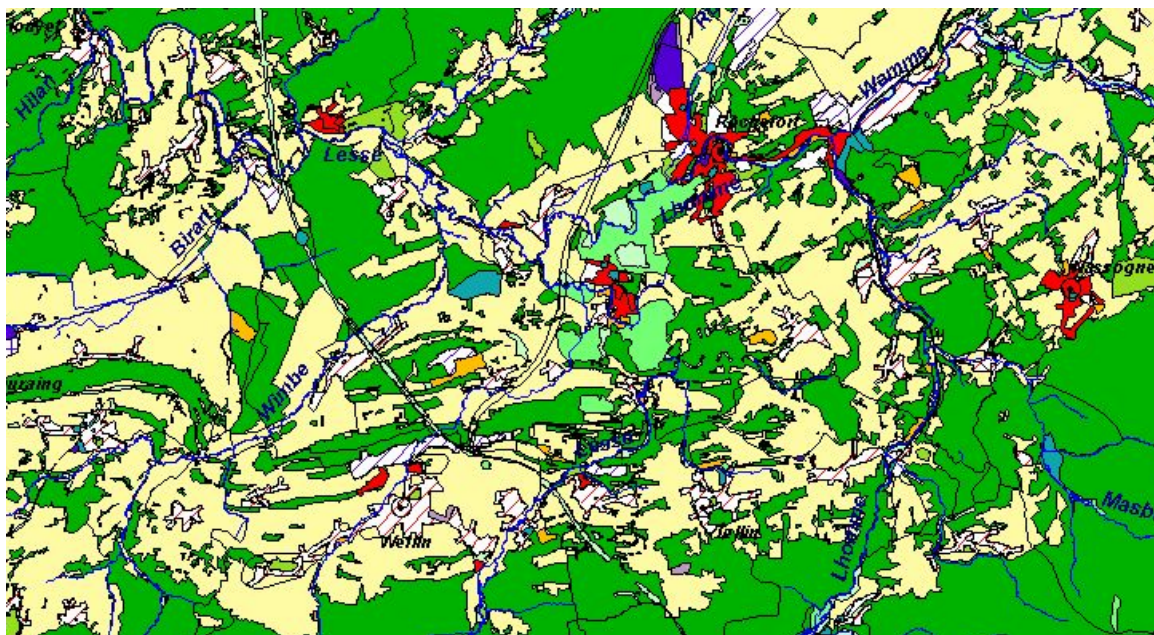


Fig. 3 : Sector plan – Plan de secteur (Cartes des Etats des lieux du sous-bassin Lesse – MRW
 Observatoire des Eaux de Surface, janvier 2004 -
http://environnement.wallonie.be/directive_eau/cartes/le_ca/le_carte.asp)

	Agricultural surfaces	Forests	Building lands and lands related	Residential lands	Industrial lands	Lands used for quarriers, wells, mines, ...	Commercial lands
Nassogne	4 385,96	5939,18	620,87	194,81	12,26	2,66	8,14
Rochefort	7628,67	7138,73	1559,27	418,48	79,87	73,12	25,76
Tellin	2 223,15	2 924,55	421,91	91,53	4,26	4,99	2,81
Wellin	2 472,31	3 794,11	419,43	109,87	18,64	18,09	4,52
	Lands used for public services	Lands for mixed use	Lands used for transports and communications	Lands occupied by technical	Lands for leisure and other open	Various	Total surface
Nassogne	7,61	2,59	329,26	0,06	63,48	250,01	11 196,01
Rochefort	34,49	8,08	741,80	0,20	177,48	200,67	16 527,34
Tellin	5,88	1,02	262,75	0,02	48,64	94,29	5 663,90
Wellin	6,66	0,46	228,75	0,08	32,35	65,80	6 751,65

Table 2: Use of the land by municipality in 2005



Fig. 4 : Land use (Cartes des Etats des lieux du sous-bassin Lesse – MRW Observatoire des Eaux de Surface, janvier 2004)

Demography of firms

Parameter	Year	Nassogne	Rochefort	Tellin	Wellin
# active firms	2000	366	839	157	202
	2005	403	850	160	208
# disappeared firms	2000	25	58	6	11
	2005	14	60	14	15
# created firms	2000	16	55	10	11
	2005	28	65	10	13

Table 3: Demography of firms – ref :

http://ecodata.mineco.fgov.be/mdf/Demographie_entreprises.jsp?CMDNAME=CHT11188&CMDTARGET=MdScatter343&LEVEL=Selon+17+activit%E9s+%28NACEBEL1%29&INDEX=-1

As far as firms' activity is concerned, we can note a strong activity for the sector of quarries with mention of two ones:

The 'Carrière des Limites' located in Wellin

The 'Carrières du Fond des Vaulx' in Wellin.

Tourism

The Natura 2000 site of the Basin of the Lesse is a zone with a strong touristic appeal with her natural richness but also with her heritage as well as her more specific equipment.

For the whole of the 4 municipalities, it is not less than ten places to visit including:

The 'Domaine des Grottes de Han' (caves and animals park)

The 'Grottes de Lorette-Rochefort'

The Castel of Lavaux Saint-Anne

The Archéoparc of Rochefort,

Numerous farms and churches (Eglise Sainte Marguerite à Lesterny, ...)

The natural site of 'Le Fond des Vaulx'

...

The basin of the Lesse it is also products of the soil/region which attracts number of tourists and makes the success of the Horeca sector (hostels, self-catering cottages, host rooms, restaurants, snacks, chip stands, brasseries, taverns and café). There are among others:

the 'Autrucherie du Donneu' (Rochefort)

The farm of the Comogne (Rochefort)

The brewing industry La Rochefortoise

The 'Chèvrerie du Herdat' (Lesterny)

...

Campsites take in number of tourists all year long as much as in Nassogne, Han-sur-Lesse and Ave-et-Auffe.

Finally pedestrian walks, cycle touristic rides, health paths or speleology and more specifically on the Lesse, kayaking and fishing reinforce the touristic appeal of the region.

On Figure 5 hereunder, we find the different interesting points on the tourism level (campsites, hostels, holidays villages, ...) in the Natura 2000 site.

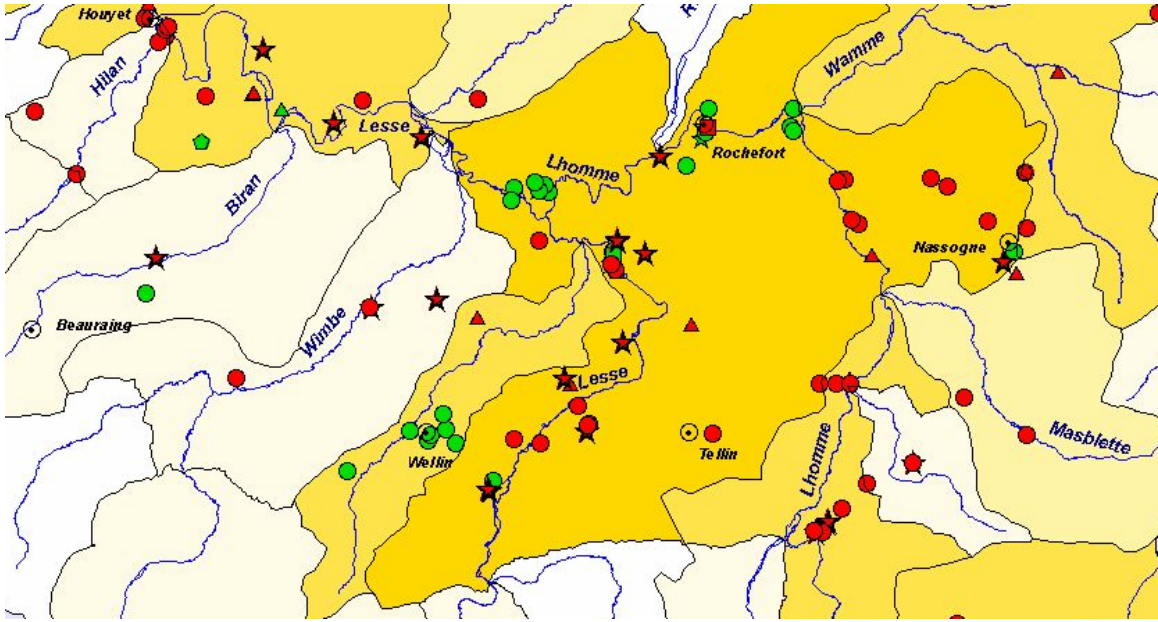


Fig. 5: Tourisme (Cartes des Etats des lieux du sous-bassin Lesse – MRW Observatoire des Eaux de Surface, janvier 2004)

1.1.3. Ecological analysis

General description

The Natura 2000 site « Bassin de la Lesse entre Villers-sur-Lesse et Chanly » (code BE35038) covers a total superficies of 2571 ha , including 2571 ha of SPA's (all the superficies) and 2284,5 ha (+ 307 km of linear habitat) of SCA's. The middle altitude is 250 meters.

This site is located in the Lesse basin, between Resteigne and Rochefort and overlap the Famenne and Ardenne biogeographical regions. Included in the Famenne region, the Calestienne sub-region gives to the site its main original characteristics : the alternation of rocky, calcareous hills (called “tiennes”), and schistous/clay depressions/valleys.

The site is covered by more than 60% of forests, in which approximatively 70% of exotic plantations (mainly Black Pine). Less than 10% of the site is composed of semi-natural open areas. The rest (30%) is mainly intensive agricultural land.

Typical habitats

The calcareous “tiennes” are colonised by a typically sub-mediterranean vegetation, because of their specific hot and dry microclimate. This is an open vegetation of calcareous grasslands and rocks, historically maintained by sheep grazing. The forest vegetations of these hills are calcareous beech forests, forests of slopes and ravines, juniper formations and downy oak forests. Several caves occupies the slopes of “tiennes” and are important for the hibernation of bats (including 6 N2000 bats species).

The depressions between “tiennes” are occupied by famennian oak forests, mesophilous meadows and also more intensively used parcels (intensive grasslands and crops). Alluvial forests occurs along rivers in valleys.

Typical species

The site lodges 23 N2000 species : 1 plant (*Bromus grossus*), 2 molluscs, 1 insect, 2 fishes, 7 mammals (6 bats species and the otter) and 10 birds species. Moreover, this site is of very great importance for a lot of endangered, protected (or not) species in Wallonia, such as reptiles, butterflies, orchids, etc...

Historical and current evolution of the site

Since the beginning of the 20th century, traditional uses of the open areas (extensive grazing and mowing,...) have progressively disappeared, inducing a natural recolonisation of these sites by the forest vegetation. Open semi-natural habitats are strongly isolated one from each other. Moreover, Black Pine has been frequently planted on ancient calcareous grasslands and Spruces and Poplars in valleys instead of indigenous forests or semi-natural grasslands. When not managed, these grasslands are invaded by shrubs and tall herbs, preventing the survival of rare plants and animals species. Mesophilous grasslands have been ploughed or fertilized and the date of the first mowing is more and more early in the season, preventing the flowering of rare plant species and the nesting of birds. The thorn-bush hedges that encircled these grasslands are progressively destroyed, preventing the nesting of some rare birds, such as the shrike.

Some forests are intensively managed for wood production, preventing the maintenance of old trees and dead wood. In certain places, rivers are polluted by agricultural and domestic rejects and their banks are in some places damaged and artificialized, preventing the nesting of sand martins and kingfisher, and the installation of the otter. But globally the physiognomy of the Lesse river has been relatively preserved.

Nowadays, there is again a big potential for calcareous grasslands restoration by cutting trees and shrubs.

Water quality of the Lesse and its tributaries

The water quality in the Lesse and Lomme rivers, the two mains rivers of the site, is rather good mainly because of the low population density in the area and of the building

of cleaning stations (some stations are currently in construction). Nowadays, the waste water of more than 60% of the population is purified. The quality of water of small tributaries is very variable, depending on the land use of the field they cross (forest vs. intensive agricultural land) and on the presence of human habitat.

Available information about the Walloon study site

Appendix 2.4.1. List of habitats and species of the site

Appendix 2.4.2. Répartition des unités de gestion dans le site de la Lesse

Appendix 2.4.3. Cartography of N2000 habitats

Appendix 2.4.4. Plan de secteur

Conservation status of N2000 species and habitats : <http://biodiversite.wallonie.be/>

Main threats on this site : see Appendix 2.7

The main N2000 objective in the site is the conservation of a typical habitat: calcareous grasslands. The Lesse valley is one of the most important areas in Belgium for the conservation of this kind of habitat. To maintain this habitat in a good status of conservation, restoration measures are required to increase its area and to improve its biological quality and connectivity. After restoration measures, recurrent management measures have to be implemented (e.g. redevelopment of sheep grazing) to guarantee the perenniality of the habitat.

The ecological situation 1 is more deeply described in the documents “Avant-projet d’arrêté de designation (+ cartes)”, and measures to be taken to maintain habitats and species in a good status of conservation can be found in the “Cahiers scientifiques habitats et espèces”, and “Arrêté “mesures””, in which, for each kind of habitat and species, prohibitions, technical measures,... are described.

1.2.2. Socio-economic analysis

At the end, we wish from the firms, located on and near the Natura 2000 site concerned, a bigger societal responsibility. We need from their to be perfectly aware of the role they have to play to get the conservation objectives scheduled for the site and that they work at the maximum for the effective realization of these objectives.

We wait from stakeholders on the field, farmers and foresters, to participate to the process of active management on the site, to sign agreements and also respect the terms of them.

As for citizens, we wish that they will be fully conscious of the role they can play for nature conservation.

2. Flemish region : Demer valley

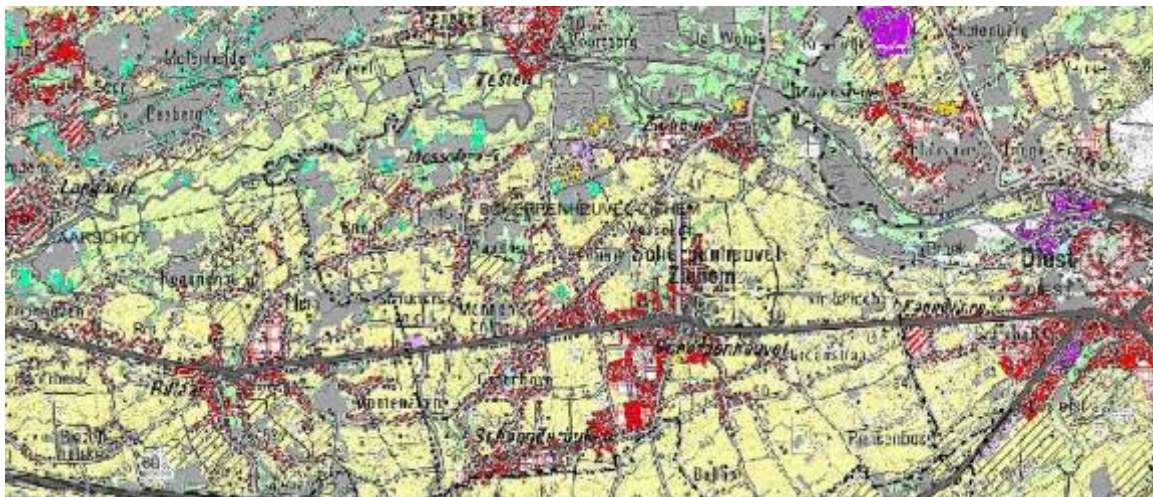
2.1. Description of situation 0 (current situation)

2.1.1. Location of Demer valley in Flanders

The valley of the Demer is situated at the eastern side of the Flemish rural network, also called the Flemish square (Vlaamse Ruit), which comprises the urban centra of Antwerp, Gent, Brussels and Leuven. The valley lies in the centre of the area that connects the Hageland and the province of Haspengouw with the southern Kempen and it forms one of the most important open spaces in Flanders.

2.1.2. Socio-economic analysis

The plan of designation (gewestplan) shows that the valley between Diest and Aarschot has a very rural character, with a great share of agricultural area of ecological importance, nature areas or nature areas with scientific value or nature reserves and forest areas. From Diest in the east till Aarschot in the west, the area is Bird Directive area and some pieces in between are Habitat Directive area.



Bodemgebruik en verstedelijking

Within or near the Natura 2000 site, some medium to small villages can be found. In the table below some of the demographic characteristics are given for these locations. These are indicators for the demographic pressure on the surrounding areas.

Municipality	Surface area(km ²)	inhabitants	Population density (#/km ²)	Evolution (2007)	Unemployment rate (2007)
Diest	58,2	22.845	392,5	+0,46%	6,46%
Scherpenheuvel-Zichem	50,5	22.100	437,6	+0,16%	5,81%
Aarschot	62,52	28.021	448,2	+0,56%	5,33%

Further in the valley of the Demer, some more important and bigger municipalities can be found such as Hasselt, Diepenbeek en Bilzen.

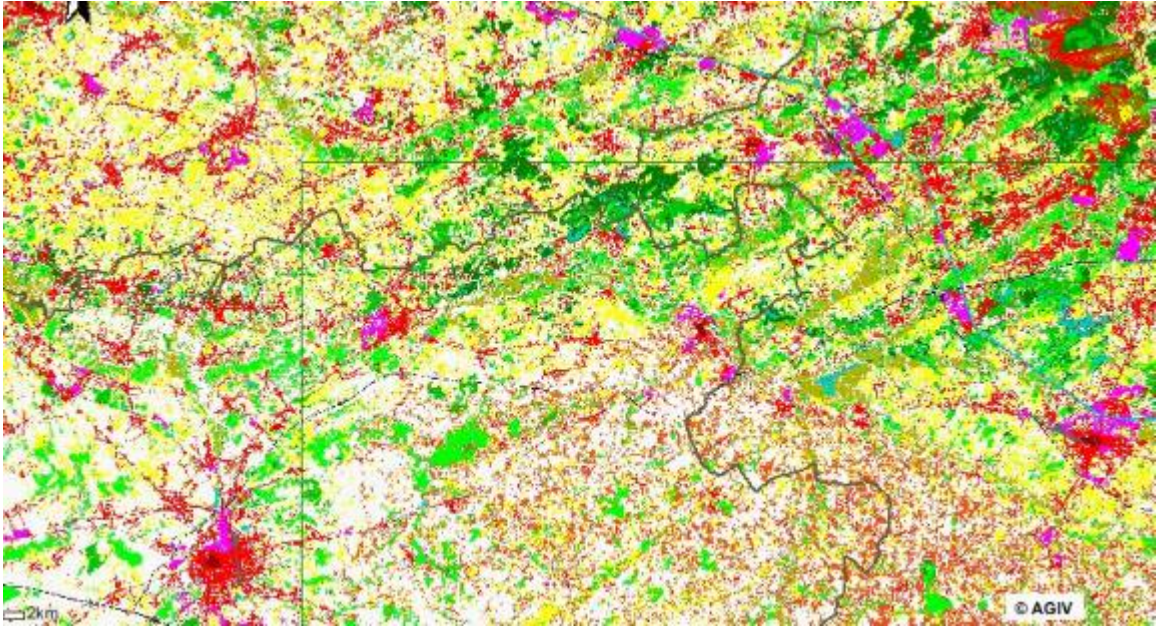
On a soil usage map, one can see that in the valley of the Demer:

The urbanisation is pushing from south to north up towards the Demer valley. Especially the line south of Hasselt, Diest and Aarschot around the E314. Even north of this route, small municipalities such as Rillaar and Scherpenheuvel are invading the valley.

The basin of the Demer is a complex mix of land use with some major industrial sites along the Albertkanaal (in Tesenderlo). The north of the study area has relatively more agricultural land.

On a lower scale, one notices the linear pattern of building.

In the north, the study site in the valley is shielded by a green belt of forests and agriculture in the north and by a belt of agriculture in the south.





The valley itself is relatively well conserved from major urbanisation even though some industrial development has taken place.

Fragmentation

There are only two places near Zichem and Teselt where the valley is fragmented up to the flooding area by buildings. In Scherpenheuvel there is an illegal site with holiday houses that cannot be regulated because of the plans to use this place for flood control and water storage.



Sectoral analysis: agriculture

For the OPD (Ontwikkelingsplan Demer), a sectoral analysis was made by the VLM. The study site is larger than the Natura2000 site but the document gives a relatively good insight in the agricultural context in the area.

On the basis of the results of this analysis, some data can be found regarding the importance of agriculture in the region. Of the 916 ha agricultural land registered at the Mestbank, 651 ha lies between Diest and Aarschot in the study area of the OPD. 79 % and 54% of the agricultural land between Diest and Testelt and Testelt and Aarschot

respectively is grassland. On the other hand increases the importance of crops farming from east to west with 6% in the region from Diest to Testelt and 31% in the region from Testelt to Aarschot. This change is caused by the fact that the main activity in the region between Aarschot and Diest is cattle farming.

The main bottlenecks for farming were analysed through interviews with farmers. The main problem in the region seemed to be the lack of land and the high fragmentation of land. This makes it difficult for farmers to expand their farm. Some farmland is also dedicated to other purposes like nature, housing, industry and this puts even more pressure on the land. The high number of regulations according to farming activities are also considered to be a bottleneck. Last but not least, farmers indicated that uncertainty for the future about rules and legislation makes investments difficult. According to information from Boerenbond, there is hardly any bio-agriculture in the region. While some farmers try to, it does not seem economically feasible at the moment.

2.1.2. Ecological analysis (Problems and threats description)

During the last century, the ecosystem functioning of the Demer-river has been severely disrupted by means of infrastructural works. The straightening and deepening of the river-flow, as well as the walling of the shoreline and constructions in the river, have put severe restrictions on natural dynamic river processes and have also dramatically reduced habitat diversity. Since 1976, the relationship of the Demer and her alluvial planes has been interrupted as the water can only flow from the valley into the river, and no more from the river to the valley. Large areas of the valley, which are perfectly applicable to it, can therefore no longer be inundated. Furthermore, as a consequence from the river works, the Demer became situated deeper and deeper in the landscape, causing the ground water level to drop. These factors have caused a serious drought problem, which on its turn, decreased the natural value of the entire valley. Studies have shown amongst others that when the Demer level is low, the nearby percolation zones drop entirely dry. Furthermore, until the early 90's, the Demer was used as an open sewer. Luckily, since then, water quality has improved and is expected to continue doing so, as the water purification infrastructure is being further established. The populations of fish in the

Demer respond in a positive way to the improved water quality. However, lots of fish that are present in the river are known to be exotic species, that invaded the river from neighbouring ponds during severe inundations. Although the prospectives concerning the treatment of household waste water are good, the pollution by agriculture and industry remains a problem. For example the disposals by Tessenderlo Chemie in the past and the present have a negative impact on the quality of the Demerwater. All these factors make that in global, the waterquality of the Demer is moderate to bad, and the norms for the waterquality that were set up are still far from being reached. Efforts for nature conservation are counteracted by several bottlenecks (drought and pollution, fragmentation, disturbance, garden-expansion, etc.) as a consequence of intensive agriculture and forestry, hunting practices and fishery, the lack of nature orientated arrangement and management, illegal constructions and habitation and so on. The management of the water quantities, the pollution problem and nature conservation therefore remain important issues for the Demer river and its valley.

2.2. Description of situation 1: favorable conservation status

Ecological analysis

The ecological status that is to be reached is described in the “Natuurrichtplan”, which contains an areal vision of the Demer Valley. This vision is expressed by concepts which consist of several nature goal types. These nature goal types have a sufficient surface to also be meaningful for populations of faunatic species.

A central element to become in the Demer Valley is a meandering river with sidestreams with natural stream and erosion processes. The river has natural shore walls, except there where the residential nuclei are located (Diest, Zichem, Testelt, Langdorp, Aarschot), and has a good water quality. Natural spawn places and little brooks are connected to the river. These streaming waters form the habitat for several rare species, such as the Kingfisher (*Alcedo atthis*) and the Water Shrew (*Neomys fodiens*).

Alongside certain areas of the river, humid river- and brook valley forests are developed. These form an important ecological corridor for many forest plant species, forest birds, Slow worm (*Anguis fragilis*) and perhaps the beaver (*Castor fiber*). Wet

forests, under influence of groundwater or slowly moving water will also be developed, besides swamp areas, wet and dry grasslands, grazed grassland, haylands and heathland. All these nature goal types serve as specific habitats for many endangered species and can therefore be considered as very valuable ecosystems. All types and their location are described more in detail in the “Natuurrichtplan”.

3. References

Martens, L., Hermy, H., 2001, Ontwerp van Ecosysteemvisie voor de Demervallei tussen Werchter en Diest, Deel 1: Omgevingsanalyse, Ministerie van Vlaamse Gemeenschap, AMINAL Afdeling Natuur, 246 p.

Martens, L., Hermy, H., 2001, Ontwerp van Ecosysteemvisie voor de Demervallei tussen Werchter en Diest, Deel 2: Gebiedsvisie, Ministerie van Vlaamse Gemeenschap, AMINAL Afdeling Natuur, 201 p.

Tijdelijke Handelsvennootschap Haecon – Sumresearch – Taken landschapsplanningstudie, 2007, Ontwikkelingsplan Demer: Omgevingsanalyse, Vlaamse Overheid, 298 p.

Natuurrichtplan voor het Vlaams Ecologisch Netwerk (VEN), de Speciale Beschermingszones (SBZ) en de groene bestemmingsgebieden van de “Demervallei tussen Diest en Aarschot”, 2007, Agentschap voor Natuur en Bos, 67 p.













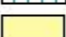

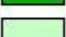





VLM (2005) - Landbouwstudie voor de Demervallei tussen Diest en Werchter. Niet technische samenvatting als onderdeel van de studie Ontwikkelingsplan Demer (OPD-studie). in opdracht van AMINAL afdeling Natuur.

Websites










Wikipedia, 2008, [http://fr.wikipedia.org/wiki/Lesse_\(cours_d'eau\)](http://fr.wikipedia.org/wiki/Lesse_(cours_d'eau)) (consultation in May 2008)

4. Appendices

Appendix 1: caption of the « Plan de secteur »

Légende	
Plan de secteur (année 2000)	
	Activité économique
	Activité industrielle
	Aménagement différé
	Aménagement différé industriel
	Plan d'eau
	Plan d'eau à créer
	Zone d'habitat
	Habitat à caractère rural
	Station touristique
	Services publics et Centre d'enfouissement technique
	Servitude particulière
	Zone agricole
	Zone forestière
	Espace vert
	Zone naturelle
	Zone de parc
	Zone d'extraction
Districts hydrographiques internationaux	
	Limites des districts (partie wallonne)
Sous-bassins hydrographiques régionaux	
	Limites des sous-bassins
Réseau hydrographique	
	Ruisseaux, rivières, fleuves, canaux

Appendix 2: Caption of the Walloon population density map

<i>Légende</i>	
Population : densité de population (hab./km²)	
	< 100
	>= 100 - < 500
	>= 500 - < 2500
	>= 2500 - < 5000
	>= 5000
Réseau hydrographique	
	Ruisseaux, rivières, fleuves, canaux
	Lacs, étangs, réservoirs
Districts hydrographiques internationaux	
	Limites des districts (partie wallonne)
Sous-bassins hydrographiques régionaux	
	Limites des sous-bassins

Appendix 3: Caption of the Walloon land use map

Légende	
Occupation du sol	
	Forêts de résineux
	Forêts mixtes
	Forêts de feuillus
	Espaces verts urbains
	Friches et incultes
	Sites industriels et carrières désaffectés
	Prairies permanentes
	Cultures saisonnières
	Habitat discontinu
	Habitat dense
	Habitat et services
	Industries et services
	Carrières, sablières et terrils
	Terrains et aérodromes militaires
	Plans d'eau
Districts hydrographiques internationaux	
	Limites des districts (partie wallonne)
Sous-bassins hydrographiques régionaux	
	Limites des sous-bassins
Réseau hydrographique	
	Ruisseaux, rivières, fleuves, canaux

Appendix 4: Caption of the Walloon tourism map

<p>Légende</p> <p>Etablissements touristiques</p> <ul style="list-style-type: none"> △ Campings ☆ Hôtels ○ Tourisme rural □ Tourisme social ◇ Village de vacances 	<p>Type de rejet</p> <ul style="list-style-type: none"> ▲★●■◆ Direct en eaux de surface ▲★●■◆ Vers une station d'épuration
	<p>Communes principales</p> <ul style="list-style-type: none"> ⊙
<p>Equivalents habitants générés dans le bassin versant propre de la masse d'eau (EH)</p> <ul style="list-style-type: none"> □ 0 □ > 0 - <=250 □ > 250 - <=500 □ > 500 - <=2500 □ > 2500 - <=5000 □ > 5000 	<p>Districts hydrographiques internationaux</p> <ul style="list-style-type: none"> □ Limites des districts (partie wallonne)
	<p>Sous-bassins hydrographiques régionaux</p> <ul style="list-style-type: none"> □ Limites des sous-bassins
	<p>Sous-bassins propres des masses d'eau</p> <ul style="list-style-type: none"> □ Limites des sous-bassins
	<p>Caractérisation des masses d'eau</p> <ul style="list-style-type: none"> ∩ Masses d'eau naturelles ∩ Masses d'eau fortement modifiées ∩ Masses d'eau artificielles

APPENDIX 2.4.1

Code		BE35038
Fr/Nl name		Vallée de la Lesse entre Villers-sur-Lesse et Chanly
English name		River Lesse Basin between Villers-sur-Lesse and Chanly
Region		Calestienne
Area		2569 ha (2595)
Proportion of great type of habitats	Proportion of deciduous forests	42%
	Proportion of exotic coniferous and mixed forests	27%

	N2000 code	*	Name of habitat	Group of habitats	Percentage of the total area	
Habitats of Community interest	3260		Water courses of plain to montane levels with the Ranunculion fluitantis and Callitriche-Batrachion vegetation	R	0,5	
	4030		European dry heaths	DG	0,02	
	5130		Juniperus communis formations on heaths or calcareous grasslands	DG	0,11	
	6110	*	Rupicolous calcareous or basophilic grasslands of the Alysso-Sedion albi	DG	0,07	
	6210		Semi-natural dry grasslands and scrubland facies on calcareous substrates (Festuco-Brometalia) (* important orchid sites)	DG	1,32	
	6410		Molinia meadows	WG	?	
	6430		Hydrophilous tall herb fringe communities of plains and of the montane to alpine levels	WG	0,36	
	6510		Lowland hay meadows (Alopecurus pratensis, Sanguisorba officinalis)	DG	3,67	
	7220	*	Petrifying springs with tufa formation (Cratoneurion)	PS	<0,01	
	8160	*	Medio-European calcareous scree of hill and montane levels	DG	0,01	
	8210		Calcareous rocky slopes with chasmophytic vegetation	DG	0,11	
	8220		Siliceous rocky slopes with chasmophytic vegetation	DG	0,01	
	8310		Caves not open to the public	C	0,01	
	9110		Luzulo-Fagetum beech forests	F	1,52	
	9120		Atlantic acidophilous beech forests with Ilex and sometimes also Taxus in the shrublayer (Quercinion robori-petraeae or Ilici-Fagenion)	F	6,09	
	9150		Medio-European limestone beech forests of the Cephalanthero-Fagion	F	6,45	
	9160		Sub-Atlantic and medio-European oak or oak-hornbeam forests of the Carpinion betuli	F	6,82	
	9180	*	Tilio-Acerion forests of slopes, screes and ravines	F	0,89	
	91E0	*	Alluvial forests with Alnus glutinosa and Fraxinus excelsior (Alno-Pandion, Alnion incanae, Salicion albae)	F	0,23	
	Species of Community interest	1882		Bromus grossus		X
		1016		Vertigo moulinsiana		X
		1032		Unio crassus		X
		1074		Eriogaster catax		X
1096			Lampetra planeri		X	
1163			Cottus gobio		X	
1303			Rhinolophus hipposideros		X	
1304			Rhinolophus ferrumequinum		X	
1318			Myotis dasycneme		X	
1321			Myotis emarginatus		X	
1323			Myotis bechsteini		X	
1324			Myotis myotis		X	
1355			Lutra lutra		X	
Species of the Birds Directive		A030		Ciconia nigra		X
		A072		Pernis apivorus		X
	A215		Bubo bubo		X	
	A229		Alcedo atthis		X	
	A236		Dryocopus martius		X	
	A238		Dendrocopus medius		X	
	A338		Lanius collurio		X	
	A340		Lanius excubitor		X	
	A052		Anas crecca		X	
	A082		Circus cyaneus		X	

Appendix 2.4.2 : Répartition des unités de gestion dans le site de la Lesse

A. Landes, pelouses sèches, éboulis, rochers et espèces associées

Unité de gestion A1 : Fragments de landes sèches, de formations à génévrier, d'éboulis sur calcaires et de pelouses sur rochers

10.2 ha - Soumis = 26%

Unité de gestion A2 : Pelouses sèches semi-naturelles sur calcaire

35.7 ha - Soumis = 41%

Unité de gestion A3 : Faciès plus ou moins avancés d'embuissonnement de pelouses sèches et habitats associés

39.1 ha - Soumis = 65%

Unité de gestion A4 : Forêts feuillues claires et fourrés abritant des espèces typiques des pelouses sèches (notamment la Laineuse du prunellier) et la Bondrée apivore et le Pic noir

49.1 ha - Soumis = 72%

Unité de gestion A5 : Pelouses sèches plantées de résineux à restaurer rapidement pour éviter leur disparition définitive

88.3 ha - Soumis = 94%

Unité de gestion A6 : Plantations résineuses dont la restauration est encouragée pour recréer à long terme des surfaces d'habitats présents dans les UG A1 à A5

65.9 ha - Soumis = 86%

B. Pelouses maigres de fauche et espèces associées

Unité de gestion B1 : Pelouses maigres de fauche et espèces associées

100.2 ha - Soumis = 11%

Unité de gestion B2 : Prairies de liaison et habitats d'espèces

114.1 ha - Soumis = 6%

C : Habitats des fonds de vallées alluviaux

Unité de gestion C1 : Habitats des cours d'eau et espèces associées

47.350 km / 97.9 ha - Soumis < 2%

Unité de gestion C2 : Forêts alluviales à *Alnus glutinosa* et *Fraxinus excelsior* (91E0*) et à chênes pédonculés (9160)

47.9 ha - Soumis = 29%

Unité de gestion C3 : Habitats alluviaux ouverts

15.2 ha - Soumis = 9%

Unité de gestion C4 : Plans d'eau

1.1 ha - Soumis = 0%

Unité de gestion C5 : Habitat de la loutre (I355) au bord de la Lesse

34.5 ha - Soumis = 0%

D : Habitats d'espèces des milieux ouverts

Unité de gestion D1 : Habitat du vespertilion à oreilles échancrées (I321)

99.1 ha - Soumis = 1%

Unité de gestion D2 : Habitat de la pie-grièche écorcheur (A338) et de la pie-grièche grise (A340)

282.6 ha - Soumis = 0%

Zone objectif n° E : Habitats forestiers et espèces associées

Unité de gestion E1 : Hêtraie du Luzulo-Fagetum (9110), de l'Asperulo-Fagetum (9130), hêtraies calcicoles médio-européennes du Cephalanthero-Fagion (9150) et habitats favorables au Pic noir (Dryocopus martius - A236) et à la Bondrée apivore (Pernis apivorus - A072)

877.1 ha - Soumis = 73%

Unité de gestion E2 : Chênaies pédonculées ou chênaies-charmaies sub-atlantiques et médio-européennes du Carpinion betuli (9160)

192.7 ha - Soumis = 88%

Unité de gestion E3 : Forêts de pente, éboulis ou ravins du Tilio-Acerion (9180)*

82.4 ha - Soumis = 85%

Unité de gestion E4 : Espèces forestières (pic noir et bondrée apivore)

346.7 ha - Soumis = 70%

F : Habitat du brome raide (Bromus grossus)

Unité de gestion F1 : habitat du brome raide

20.6 ha

G : Grottes non-exploitées par le tourisme et espèces associées

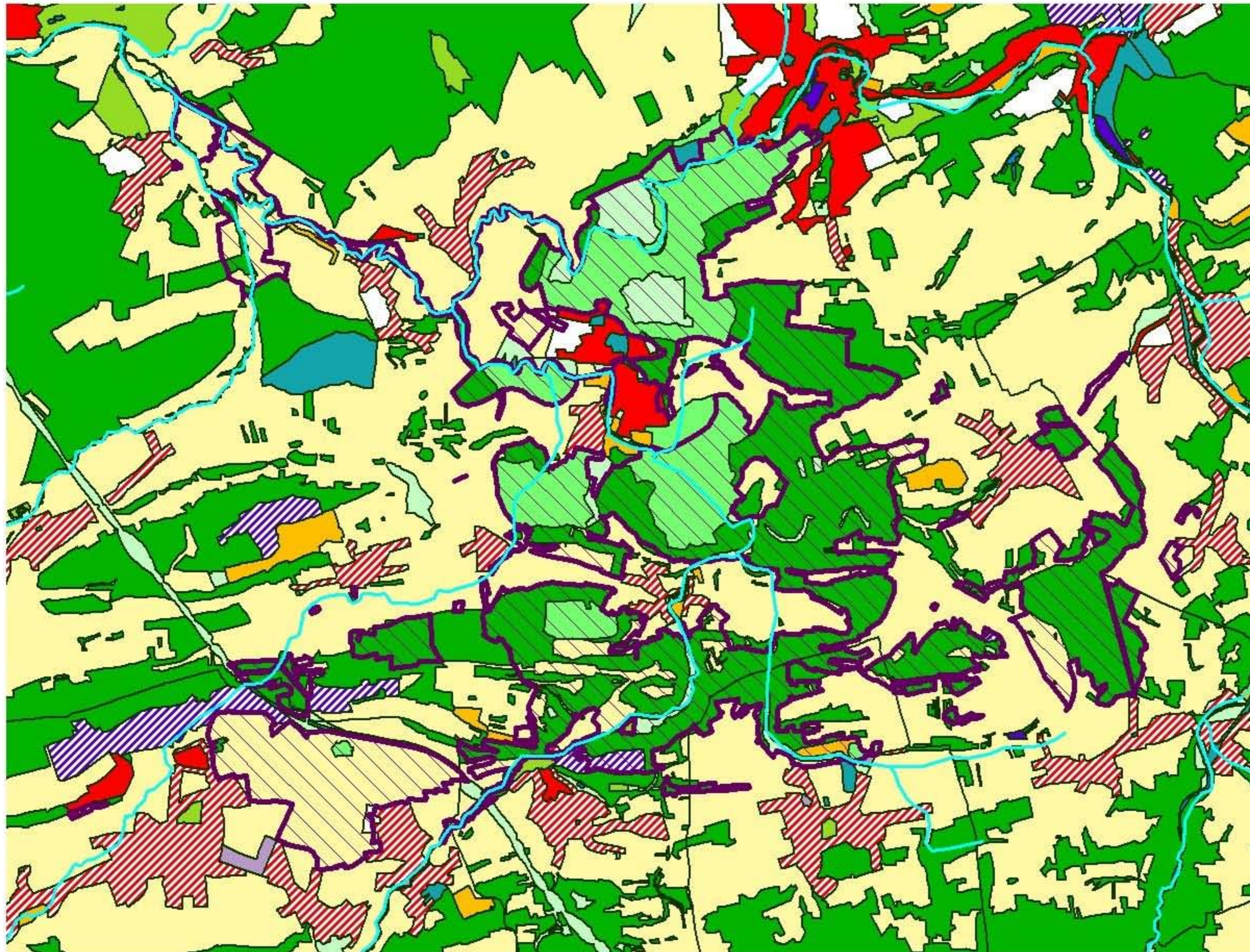
Unité de gestion G1 : Habitats des chauves-souris

BE35038 - Lesse : vue des habitats WALEUNIS principaux (19.03.2006)

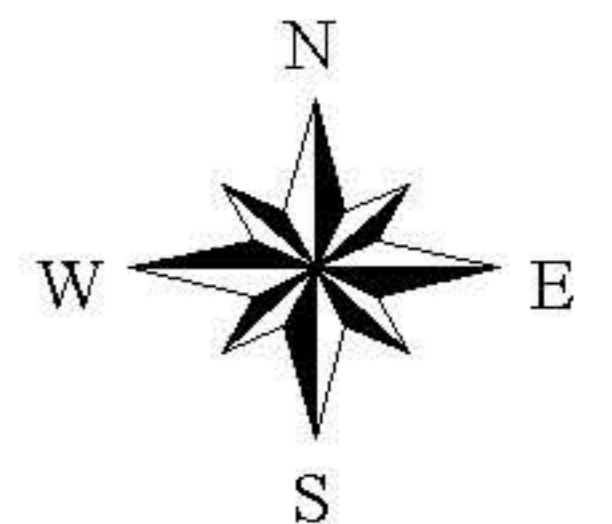
Vue des habitats Waleunis

Habitats WALEUNIS principaux			
	C1-Eaux stagnantes		G1-Forets feuillues
	C2-Eaux courantes (+)		G1-Forets feuillues (+)
	E1-Pelouses seches (+)		G1-Plantations feuillues
	E2-Prairies de fauche (+)		G1-Plantations feuillues (+)
	E2-Prairies mesophiles		G3-Plantations resinieuses
	E2-Prairies seches (+)		G4-Forets mixtes
	E3-Prairies humides		G4-Forets mixtes (+)
	E5-Megaphorbiaies (+)		G5-Autres etats forestiers
	E5-Vegetation ruderales		Hc-Eboulis et falaises (+)
	F3-Landes et fourres		I1-Cultures
	F3-Landes et fourres (+)		I1-Prairies temporaires
	FA-Haies		I2-Jardins et parcs
	FB-Plantations de ligneux bas		Jc-Zone construite
	G1-Forets alluviales (+)		Autres sites Natura2000

Plans de secteur dans la Vallée de la Lesse



0 4 8 Kilometers



Appendix 2.5

Code		BE35038	BE240014
Fr/Nl name		Vallée de la Lesse entre Villers-sur-Lesse et Charly	Demervallei
English name		River Lesse Basin between Villers-sur-Lesse and Charly	Valley of the Demer
Region		Calestienne	Hagelandse Heuvelstreek
Area		2569 ha (2595)	4910
Proportion of great type of habitats	Proportion of deciduous forests	42%	
	Proportion of exotic coniferous and mixed forests	27%	
Habitats of Community interest		Percentage of the total area	presence/absence
	2310 Dry sand heaths with Calluna and Genista	0	X
	2330 Inland dunes with open Corynephorus and Agrostis grasslands	0	X
	3110 Oligotrophic waters containing very few minerals of sandy plains (Littorelletalia uniflorae)	0	X
	3130 Oligotrophic to mesotrophic standing waters with vegetation of the Littorelletea uniflorae and/or of the Isoëto-Nanojuncetea	0	X
	3150 Natural eutrophic lakes with Magnopotamion or Hydrocharition – type vegetation	0	X
	3260 Water courses of plain to montane levels with the Ranunculion fluitantis and Callitricho-Batrachion vegetation	0,5	0
	4010 Northern Atlantic wet heaths with Erica tetralix	0	X
	4030 European dry heaths	0,02	X
	5130 Juniperus communis formations on heaths or calcareous grasslands	0,11	0
	6110 * Rupicolous calcareous or basophilic grasslands of the Alysso-Sedion albi	0,07	0
	6210 Semi-natural dry grasslands and scrubland facies on calcareous substrates (Festuco-Brometalia) (* important orchid sites)	1,32	0
	6230 * Species-rich Nardus grasslands, on siliceous substrates in mountain areas (and submountain areas in Continental Europe)	0	X
	6430 Hydrophilous tall herb fringe communities of plains and of the montane to alpine levels	0,36	X
	6510 Lowland hay meadows (Alopecurus pratensis, Sanguisorba officinalis)	3,67	X
	7140 Transition mires and quaking bogs	0	X
	7150 Depressions on peat substrates of the Rhynchosporion	0	X
	7220 * Petrifying springs with tufa formation (Cratoneurion)	<0,01	0
	8160 * Medio-European calcareous scree of hill and montane levels	0,01	0
	8210 Calcareous rocky slopes with chasmophytic vegetation	0,11	0
	8220 Siliceous rocky slopes with chasmophytic vegetation	0,01	0
	8310 Caves not open to the public	0,01	0
	9110 Luzulo-Fagetum beech forests	1,52	0
	9120 Atlantic acidophilous beech forests with Ilex and sometimes also Taxus in the shrublayer (Quercinion robori-petraeae or Ilici-Fagenion)	6,09	X
	9150 Medio-European limestone beech forests of the Cephalanthero-Fagion	6,45	0
	9160 Sub-Atlantic and medio-European oak or oak-hornbeam forests of the Carpinion betuli	6,82	X
	9180 * Tilio-Acerion forests of slopes, screes and ravines	0,89	0
	9190 Old acidophilous oak woods with Quercus robur on sandy plains	0	X
	91E0 * Alluvial forests with Alnus glutinosa and Fraxinus excelsior (Alno-Pandion, Alnion incanae, Salicion albae)	0,23	X

Species of Community interest			Presence/absence			
Species of Community interest	Amphibians	Triturus cristatus (1166)	0	X		
	Bivalvia	Unio crassus (1016)	X	0		
	Fish	Cottus gobio (1163)	X	0		
		Lampetra planeri (1096)	X	0		
		Misgurnus fossilis (1145)	0	X		
		Rhodeus sericeus amarus (1134)	0	X		
		Eriogaster catax (1074)	X	0		
	Lepidoptera	Lutra lutra (1355)	X	0		
	Mammals	Myotis bechsteini (1323)	X	0		
	Mammals - Bats	Myotis dasycneme (1318)	X	0		
		Myotis emarginatus (1321)	X	0		
		Myotis myotis (1324)	X	0		
		Rhinolophus ferrumequinum (1304)	X	0		
		Rhinolophus hipposideros (1303)	X	0		
		Plants	Apium repens (1614)	0	X	
		Bromus grossus (1882)	X	0		
		Luronium natans (1831)	0	X		
		Species of the Birds Directive		Alcedo atthis (A229)	X	X
				Anas crecca (A052)	X	0
			Botaurus stellaris	0	X	
	Bubo bubo (A215)		X	0		
	Ciconia nigra (A030)		X	0		
	Circus cyaneus (A082)		X	0		
	Dendrocopus medius (A238)		X	0		
	Dryocopus martius (A236)		X	X		
	Ixobrychus minutus		0	X		
	Lanius collurio (A338)		X	X		
	Lanius excubitor (A340)		X	0		
	Luscinia svecica		0	X		
	Pernis apivorus (A072)		X	X		
	Porzana porzana		0	X		

APPENDIX 2.6

Code		BE35038
Fr/Nl name		Vallée de la Lesse entre Villers-sur-Lesse et Chanly
English name		River Lesse Basin between Villers-sur-Lesse and Chanly
Region		Calestienne
Area		2569 ha (2595)
Proportion of great type of habitats	Proportion of deciduous forests Proportion of exotic coniferous and mixed forests	42% 27%

	N2000 code	*	Name of habitat	Group of habitats	Percentage of the total area
Habitats of Community interest	3260		Water courses of plain to montane levels with the Ranunculion fluitantis and Callitriche-Batrachion vegetation	R	0,5
	4030		European dry heaths	DG	0,02
	5130		Juniperus communis formations on heaths or calcareous grasslands	DG	0,11
	6110	*	Rupicolous calcareous or basophilic grasslands of the Alysso-Sedion albi	DG	0,07
	6210		Semi-natural dry grasslands and scrubland facies on calcareous substrates(Festuco-Brometalia) (* important orchid sites)	DG	1,32
	6430		Hydrophilous tall herb fringe communities of plains and of the montane to alpine levels Lowland hay meadows (Alopecurus pratensis,Sanguisorba officinalis)	WG	0,36
	6510			DG	3,67
	7220	*	Petrifying springs with tufa formation (Cratoneurion) Medio-European calcareous scree of hill and montane levels	PS	<0,01
	8160	*		DG	0,01
	8210		Calcareous rocky slopes with chasmophytic vegetation	DG	0,11
	8220		Siliceous rocky slopes with chasmophytic vegetation	DG	0,01
	8310		Caves not open to the public	C	0,01
	9110		Luzulo-Fagetum beech forests	F	1,52

Species of Community interest	9120	Atlantic acidophilous beech forests with Ilex and sometimes also Taxus in the shrublayer (Quercinion robori-petraeae or Ilici-Fagenion)	F	6,09
	9150	Medio-European limestone beech forests of the Cephalanthero-Fagion	F	6,45
	9160	Sub-Atlantic and medio-European oak or oak-hornbeam forests of the Carpinion betuli	F	6,82
	9180	* Tilio-Acerion forests of slopes, screes and ravines	F	0,89
	91E0	* Alluvial forests with Alnus glutinosa and Fraxinus excelsior (Alno-Pandion, Alnion incanae, Salicion albae)	F	0,23
	1882	Bromus grossus		X
	1016	Unio crassus		X
	1074	Eriogaster catax		X
	1096	Lampetra planeri		X
	1163	Cottus gobio		X
Species of the Birds Directive	1303	Rhinolophus hipposideros		X
	1304	Rhinolophus ferrumequinum		X
	1318	Myotis dasycneme		X
	1321	Myotis emarginatus		X
	1323	Myotis bechsteini		X
	1324	Myotis myotis		X
	1355	Lutra lutra		X
	A030	Ciconia nigra		X
	A072	Pernis apivorus		X
	A215	Bubo bubo		X
	A229	Alcedo atthis		X
	A236	Dryocopus martius		X
	A238	Dendrocopus medius		X
	A338	Lanius collurio		X
	A340	Lanius excubitor		X
	A052	Anas crecca		X
	A082	Circus cyaneus		X

Habitats groups	Scale of the threat (Broad or Specific)	Forests (F)	Dry grasslands (DG)	Wet grasslands (WG)	Rivers (R)	Petrifying springs (PS)	Caves (C)	Pièces d'eau (ponds)
Main threats								
Global problems								
Habitat fragmentation	B	2	2	2	2	1	1	2
Global warming	B	2	2	2	2	1	1	2
Urbanisation	B	2	2	2	2	2	2	2
Water								
Water pollution	B	0	0	1	2	2	1	2
Water eutrophication	B	0	0	1	2	2	1	2
Pumping	S	1	0	1	0	1	1	1
Reshaping and correction of waterways	S	1	0	1	2	0	0	0
Clearing out of waterways	S	1	0	2	2	1	0	1
Disturbance of water supply	B	0	0	1	2	0	0	1
Soil								
Deposit ("Atterrissement")	S	0	0	0	0	0	0	2
Embankment	S	1	1	2	1	1	1	2
Soil eutrophication	B	1	2	2	0	0	0	0
Vegetation								
Woody recolonisation	B	0	2	2	0	0	0	1
Invasive species	B	1	1	2	2	0	0	2
Animals								
Animal pressure on vegetation	B	2	1	1	1	0	0	1
Animal damages on soil	B	1	2	2	0	0	0	1
Vagrancy of domestic animals	B	1	1	1	1	0	0	1
Piscicultural imbalance	B	0	0	0	2	0	0	2
Touristic activities								
Surfrequentation	B	1	2	2	2	2	2	2
Kayak / canoë	B	1	0	1	2	0	0	1
Climbing	B	0	2	0	0	2	1	0
Motorized sports	B	2	2	2	0	0	0	0

Habitats groups	Scale of the threat (Broad or Specific)							Pièces d'eau (ponds)
		Forests (F)	Dry grasslands (DG)	Wet grasslands (WG)	Rivers (R)	Petrifying springs (PS)	Caves (C)	
Sylvo-agricultural activities								
Exotic plantations	S	2	1	1	0	0	0	0
Cuttin down ("Mise à blanc")	S	2	0	0	0	0	0	0
Overexploitation of the old trees and deadwood	S	2	0	0	0	0	0	0
Abrupt edges	S	2	0	0	0	0	0	0
Drainage	S	1	0	2	1	1	0	1
Exploitation damages	S	2	0	0	2	2	0	1
Excessive mowing	S	0	2	2	0	0	0	0
Excessive grazing	S	1	2	2	0	0	0	1
Spreading of manure	S	1	2	2	0	0	0	0
Herbicides use	S	1	1	1	1	0	0	1
Pesticids use	S	2	1	1	1	0	0	1
Helminthocids use	S	0	2	2	0	0	0	0
Access of the waterways for the cattle	S	0	0	2	2	0	0	0
Ploughing	S	1	1	2	2	0	0	1
Oversowing ("Sursemis")	S	0	1	1	0	0	0	0
Organic matter storage	S	1	2	2	2	0	0	2
Trees and hedges destruction	S	0	2	2	2	0	0	1
Foddering ("Affouragement")	S	0	2	2	0	0	0	0
Other human activities								
Pollution coming from a road	S	1	1	1	1	1	1	1
Other pollutions	S	1	1	1	1	1	1	1
Green waste	S	1	1	1	1	1	1	1
Other waste	S	1	1	1	1	1	1	1
Extraction	S	1	2	1	0	2	2	0
Passage of vehicles	S	2	1	1	0	1	0	0
Creation of roadway systems	S	2	2	2	1	1	1	1
stabilization of the rock faces	S	0	2	0	0	2	0	0
Construction of infrastructures	S	1	2	2	1	1	1	1
Fishing	B	0	0	1	2	0	0	2
Artificial game feeding	S	2	2	1	0	0	0	0
Collect plants	B	2	2	2	0	0	0	1